

P.S. **A**RTS

ANNUAL REPORT

2013-2014 SCHOOL YEAR



DEAR FRIENDS

Improving
children's lives
through
arts education

It is hard to believe, but P.S. ARTS has been improving the lives of children for almost a quarter of a century now! We have changed remarkably in that time, growing in scope and service population with each successive year. We are proud to say that last year was one of the most eventful and best yet. We provided high quality dance, music, theater, and visual arts to over 15,000 students every week during the 2013-2014 school year. We also made tremendous progress developing partnerships with school districts, education and arts organizations, and other community stakeholders to increase the quality and impact of our in-school arts programs. At P.S. ARTS, we are contributing to overall school improvement at the state and national levels by sharing our curriculum, increasing training opportunities for Teaching Artists, and working with parents and public education leaders to include the arts in all learning and school life.

Additionally, in the 2013-2014 academic year, P.S. ARTS sent two students and a Teaching Artist to the White House to participate in the STEAM Fair (Science, Technology, Engineering, Arts, Math) hosted by First Lady Michelle Obama; offered 28 family arts events helping make schools more vibrant and safer places for the community; and saw firsthand the transformative power of bringing thousands of community members together in one place to create art, volunteer, beautify their schools, and spend time giving back.

The energy and excitement we experienced this past year promises to continue into 2015, and we're looking forward to sharing it with all of you. Until then, we invite you to look back with us at some of our biggest achievements of the 2013-2014 school year.

With warm regards,



Kristen Paglia
Executive Director, Education & Programs



Amy Shapiro
Executive Director, Advancement & Operations



ABOUT US

MISSION

P.S. ARTS is a nonprofit 501(c)(3) organization dedicated to improving the lives of children by providing arts education to underserved public schools and communities.

HISTORY

P.S. ARTS was created in response to significant education budget cuts in the 1970s and 1980s, which cut local tax revenues for public schools and resulted in the systematic reduction and elimination of arts programs in California public schools. Since its founding in 1991 by renowned educator and author Dr. Paul Cummins, P.S. ARTS has grown from serving 285 students in one school to approximately 20,000 students in 49 public schools across Los Angeles County and California's Central Valley. In 2014, P.S. ARTS acquired the award-winning afterschool arts organization Inside Out Community Arts to further expand our scope of service. Today, P.S. ARTS is widely regarded as an exemplar arts education provider, reaching beyond providing arts instruction and increasing quality, equity, and access in education by disseminating program resources, providing professional development, and contributing to local and national arts education policy discussions.





P.S. ARTS PROGRAMS

CLASSROOM STUDIO PROGRAMS

Students receive weekly in-school arts instruction in one or more fine arts disciplines for the entire school year. In addition to building technical skills in the arts, P.S. ARTS Teaching Artists strive to reinforce learning in all academic areas.

EXTENDED LEARNING PROGRAMS

Students are encouraged to seek opportunities outside of school to pursue knowledge and excellence in the arts. In July of 2014, P.S. ARTS acquired the Inside Out Community Arts program, which promotes leadership skills, civic responsibility, and self-confidence in middle school students and high school mentors through acting workshops and play creation.

COMMUNITY OUTREACH PROGRAMS

P.S. ARTS contributes to vibrant and safe communities by hosting free Family Art Nights and community arts festivals, where the whole family can create art together and beautify schools. P.S. ARTS also supports the broader public education community by participating in state and national policy committees and initiatives focused on overall school improvement through the arts.

COMMUNITY PARTNERSHIPS

P.S. ARTS cultivates long-term partnerships with school district leaders, arts and culture organizations, and other community groups and organizations to increase and deepen arts learning opportunities available to students and create a stronger and more sustainable network of arts services in our communities.

FACULTY TRAINING

P.S. ARTS teaching faculty is provided with a minimum of twenty hours of continued professional development opportunities annually, including curriculum development, classroom management, special education, and technology integration.



SCHOOLS

2013-2014

CAMINO NUEVO CHARTER ACADEMY

- CNCA Burlington Elementary
- CNCA Burlington Middle
- CNCA Castellanos Elementary
- CNCA Eisner Middle
- CNCA Harvard Elementary
- CNCA Harvard Middle
- CNCA Sandra Cisneros Elementary
- CNCA Sandra Cisneros Middle

LOS ANGELES UNIFIED

- Baldwin Hills Elementary
- Beethoven Street Elementary
- Coeur d'Alene Elementary
- Grand View Elementary
- Playa Del Rey Elementary
- Walgrove Avenue Elementary

LAWDALE ELEMENTARY

- Billy Mitchell Elementary
- FDR Elementary
- Kit Carson Elementary
- Lucille J. Smith Elementary
- Mark Twain Elementary
- William Anderson Elementary
- William Green Elementary

LOST HILLS ELEMENTARY

- A.M. Thomas Middle
- Lost Hills Elementary

REEF-SUNSET UNIFIED

- Avenal Elementary
- Kettleman City Elementary
- Reef-Sunset Middle
- Tamarack Elementary

SANTA MONICA-MALIBU UNIFIED

- Edison Language Academy Elementary
- Grant Elementary
- John Muir Elementary
- McKinley Elementary
- Roosevelt Elementary School
- Will Rogers Learning Community

WASCO UNION ELEMENTARY

- John L. Prueitt Elementary
- Karl F. Clemens Elementary
- Palm Avenue Elementary
- Teresa Burke Elementary
- Thomas Jefferson Middle

WISEBURN

- Juan Cabrillo Elementary
- Juan de Anza Elementary
- Peter Burnett Elementary

OUR STUDENTS

2013-2014

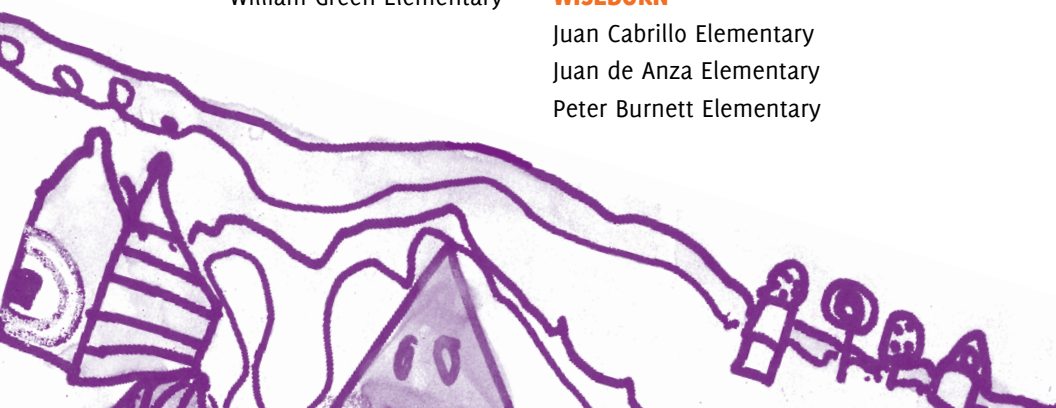
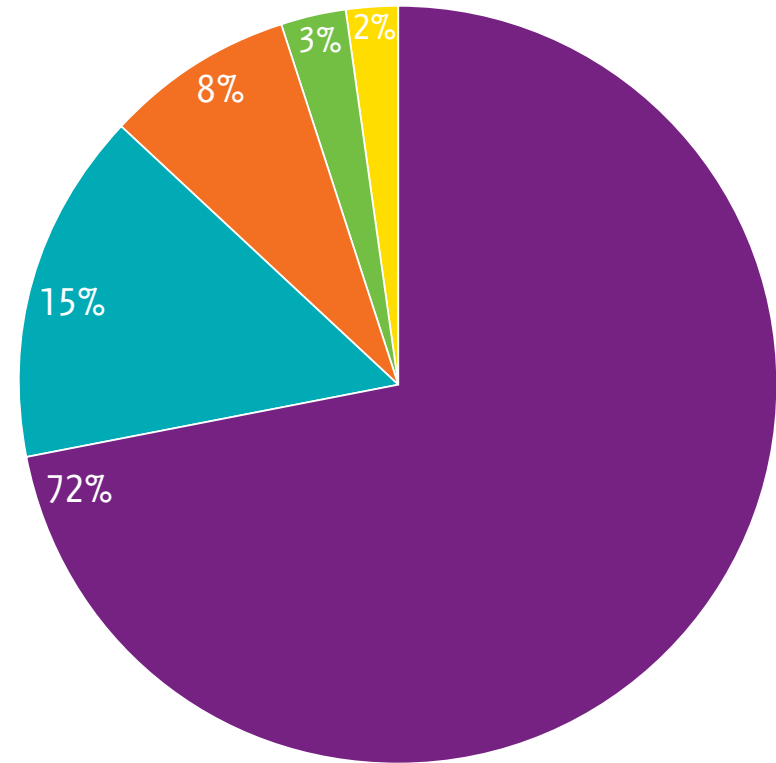
Total Students Served: **15,000**

More than **75%** live in poverty.

More than **30%** are English learners.

More than **10%** have special needs.

ETHNICITY:





TEACHING ARTISTS

2013-2014

Aiko Anglim, *Music*

Amber Carroll, *Music*

Ann Barron, *Visual Arts*

Ann Kauhfer, *Multi-Arts**

Benjamin Morales, *Visual Arts*

David Partida, *Visual Arts*

Donzell Lewis, *Theater*

Eydie Shapiro, *Music*

Heather Lowe, *Visual Arts*

Hilary Hahn, *Visual Arts*

Johanna McKay, *Theater*

Juan Muratalla, *Visual Arts*

June Edmonds, *Visual Arts*

Karla Renteria, *Visual Arts*

Kenneth Whitchard, *Theater*

Kimberleigh Aarn, *Theater**

Leah Padow, *Visual Arts**

Leo Vargas, *Theater*

Malinda Williams, *Dance*

Martha Ramirez-Oropeza, *Theater*

Mary Daval, *Music*

Matthew MacFarland, *Visual Arts*

Matthew Orduña, *Theater*

Michael Delgado, *Visual Arts*

Michelle Bourque, *Music*

Natalie Azerad, *Music*

Nathalie Sanchez, *Visual Arts*

Pedro Rivas, *Theater*

Rachel Galper, *Music*

Richard Scher, *Music**

Sandy Yamashiro, *Visual Arts*

Stephanie O'Neill, *Theater*

Susanne Huddleston, *Visual Arts*

Tamie Smith, *Visual Arts*

Terence Williams, *Theater*

Tiffani Sierra, *Theater*

Tiffany Graham, *Visual Arts*

Viktoriya Babchenko, *Music*

***DISCIPLINE SPECIALIST**



PROGRAM HIGHLIGHTS

2013-2014

P.S. ARTS expands its programs in Central California to include the Lost Hills and Wasco Union Elementary School Districts.

P.S. ARTS students from Grand View Boulevard Elementary School perform in the VSA Festival, an annual event celebrating the artistic achievements of students with disabilities, at the Music Center in Downtown Los Angeles.

P.S. ARTS participates in a study led by Dr. James Catterall measuring the impact of arts education on children's development of creativity and related social traits. The study finds that P.S. ARTS students make statistically significant gains in their ability to generate creative ideas, work collaboratively, and in their overall motivation to achieve in school.

P.S. ARTS joins the Centinela Valley High School Creative Arts Team, which is tasked with developing and implementing a comprehensive, district-wide plan for visual and performing arts instruction.

P.S. ARTS partners with Jaguar Land Rover to create take-home art kits for P.S. ARTS students.

Two P.S. ARTS students and a Teaching Artist demonstrate a model arts integration project at the White House STEAM Fair (Science, Technology, Engineering, Arts, Math) hosted by the First Lady and attended by the President.

P.S. ARTS hosts a three-day professional development training led by the Miracle Project, a nonprofit organization that works with students with autism and other special needs. The training focuses on inclusive and expressive arts and provides our Teaching Artists with a variety of new strategies to reach students with cognitive disabilities.

Almost 2,000 people attend the 3rd Annual TakePART in Art Festival, an afternoon celebration of the arts and creativity in the Centinela Valley community.

The P.S. ARTS Motto

"We have the freedom to imagine. We have the power to create."



FUNDRAISERS

Every school year, P.S. ARTS hosts three signature events to raise money for our arts education programs. These fundraisers include the family-friendly *Express Yourself* in the fall, the chic *LA Modernism Opening Night* in the spring, and the fashionable luncheon *Bag Lunch* at the end of the school year. Not only are these events another source of revenue for our programs, but they help increase the awareness of our organization and bring influential members of the Los Angeles community together for an important and compelling cause. We are pleased to announce that we raised nearly **\$830,000** to support our programs at our signature events this past year.

P.S. ARTS also partners with companies for smaller events to benefit our organization. In the 2013-2014 year, P.S. ARTS partnered with *Angeleno Magazine*, *Bloomingdale's*, *Christian Louboutin*, *Jimmy Choo*, *Peek Aren't You Curious*, *SAKS Fifth Avenue*, *TOMS Flagship* and *Vhernier* to help raise additional funds for our organization.



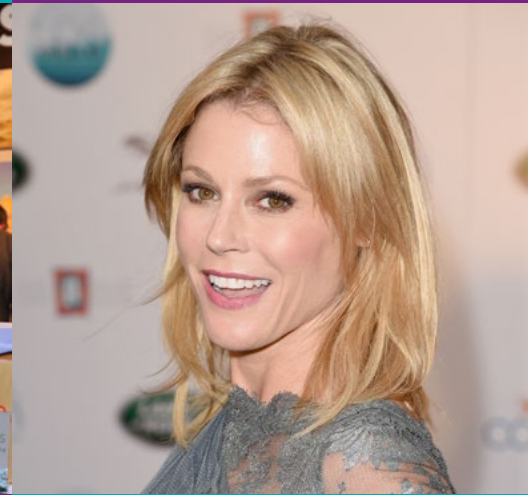
Actress Amanda Righetti at Express Yourself 2013



Actor Dan Bucatinsky and Actress/Board Member Lisa Kudrow at Express Yourself 2013



Actor Ben McKenzie at LA Modernism Opening Night 2014



Actress Julie Bowen at LA Modernism Opening Night 2014



Actress Jenna Elfman at Bag Lunch 2014



Actress Lori Loughlin at Bag Lunch 2014



DONORS

P.S. ARTS extends its appreciation to all of the individuals, corporations and foundations that generously supported the organization in the 2013-2014 school year (7/1/13-6/30/14).

\$10,000+

Lou and Page Adler
 The Herb Alpert Foundation
 Cynthia Ambuehl
 The Angell Foundation
 The Annenberg Foundation
 Maria and Bill Bell
 Pam and Alan Bergman
 Charles X. Block
 Bloomingdale's, Inc.
 Louis L. Borick Foundation
 The Brotman Foundation of CA
 Byrne Family Foundation
 California Arts Council
 California Community Foundation
 The Steven A. and Alexandra M. Cohen Foundation
 Delta Air Lines
 Department of Cultural Affairs, City of Los Angeles
 The Carl & Roberta Deutsch Foundation
 The Walt Disney Company
 Dreamworks Animation Charitable Foundation
 Dwight Stuart Youth Fund
 The Eisner Foundation
 Laura Fox and Ben Van de Bunt
 The Rosalinde and Arthur Gilbert Foundation
 The Goldhirsh-Yellin Foundation, INC.
 Hotchkis Foundation
 Natalya and Mark Hudis

Jaguar Land Rover
 Marcy Kaplan-Gold and Eric Gold
 Sarah Ketterer
 Lisa Kudrow and Michel Stern
 Los Angeles County Arts Commission
 NBC Universal Media, LLC
 OneWest Foundation
 Ovarian Cancer Research Fund
 Partners Trust
 Paul Frank Industries
 Tommy Hilfiger Corporate Foundation
 Brenda R. Potter
 Ilene Resnick and Daniel Weiss
 Resnick Family Foundation
 The Rose Hills Foundation
 The Rosenthal Family Foundation
 Saban Brands LLC
 Kim and Darryl Schall
 Sutton and Christian Stracke
 Target
 Tommy Hilfiger Corporate Foundation
 Twentieth Century Fox
 W. M. Keck Foundation
 Windgate Foundation

\$5,000-\$9,999

Ares Management, LLC
 Karl and John Boiler
 Bounce AEG
 The Eli and Edythe Broad Foundation
 Kimberly and Albert Brooks

California Arts Council
 Nancy and Steve Carell
 The Crown Robinson Family
 Jeanne Dooley-Robinson
 Kelly Fisher Katz and Martin Katz
 Garrett Family Foundation
 NJ and Mark Goldston
 Greenberg Traurig, LLP
 HBO
 Carey Hotchkis
 Kissick Family Foundation
 Melinda Lerner and John Powell
 Leslie and Bill McMorrow
 Gregory & EJ Milken Foundation
 MK Capital
 Elizabeth and David Ondaatje
 One Kings Lane
 PacSun
 Peek Aren't You Curious, Inc.
 Hadley and Lee Rierson
 Sara Rodriguez
 Kathleen and Chip Rosenbloom
 SAM, LLC
 Samantha Sedaka
 Julia Sorkin
 Suzy and Josh Tanzer
 Kathy Taslitz
 Alicia Tranen and Dave Leyrer
 Lauren and Robert Turner
 Christine and Jeff Weller
 Wells Fargo Foundation

\$1,000-\$4,999

A.N. Abell Auction Co.
 Andy Abowitz
 Atelier A.M. Inc
 Charmaine and Sean Bailey
 Elizabeth Barondes
 Sharon and Dain Blair
 Bonhams
 Shanna and Jon Brooks
 Amanda Brown and Justin Chang
 Kristen and Lindsey Buckingham
 Betsy Burnham
 Jamie Bush
 Carleen Cappelletti
 Carrie and Adam Carr
 Judy Chang
 Melanie Charlton
 Ginny Chien and Jimmy Yun
 Christine Chiu
 Christian Louboutin
 Kai Cole
 Robin Cottle and Ron Radziner
 Doris Leslie Blau
 Patrick Dragonette
 Peter Dunham
 Quinn and Bryan Ezralow
 Waldo Fernandez
 Ferrick Mason Inc.
 The Ella Fitzgerald Charitable Fund
 Oliver M. Furth
 The Getty Foundation
 The Irwin N. Gold Family Foundation
 Goldman, Sachs & Co.
 Grace Home Furnishings
 Laney Gradus
 Adrienne Grant and Paul Jennings
 Renee and Paul Haas
 Trip Haenisch & Associates
 Priscilla and Jamie Halper
 Alexander Hanan
 Candace and Clement Hirsch
 Tom Hoberman
 Inner Gardens, Inc.

Is Or Isn't Entertainment, LLC
 Molly Isaksen Interiors, Inc.
 Catherine Jayne and Steve Bardwil
 J Brand, Inc.
 Joan and David Kahn
 Meredith Kaplan
 Staci and Jonathan Kessler
 Blair and David Kohan
 Susie and Brad Krevoy
 Catherine and Ronald Kurstin
 Malcolm Kutner
 Deborah Lacusta and Daniel Castellaneta
 Lasky Charitable Lead Trust
 Thomas Lavin
 Liatis Foundation
 Mr. and Ms. Dan Livingston
 Andrea and Jason Lublin
 Lucas Studio Inc.
 Mary McDonald Inc
 Sarah and Joel McHale
 Susanne Meline and John Francis
 MLB Design
 Kinder Morgan Foundation
 Claire and Theodore Morse Foundation
 Michelle and Greg Nathan
 Mieke and Spencer Neumann
 New Visions Foundation
 Paradigm Agency
 Kristen and Jamie Paglia
 Stephanie and David Parsky
 Joanne and Matthew Pauley
 Lindsay Pennington and Tim Mosher
 Gregory Phillips
 Julia Post
 Carolyn Powers
 Saks Fifth Avenue
 Carla and Fred Sands
 Marna and Rockwell Schnabel
 Amanda and Andy Schuon
 The Schwab Fund For Charitable Giving
 Rona Sebastian
 Kate Seton

Shine America
 Azadeh Shladovsky
 Karen and Joel Silver
 Jango Circus
 Jeet Sohal and Eric Andersen
 Sotheby's
 Squid & Squash Foundation
 Sidney Stern Memorial Trust
 Toyota Financial Services
 Vanguard Charitable
 Vivid Entertainment, LLC
 Phuong Vuong and Chi-Chien Hou
 Weingart Foundation
 Mary Ann Weisberg and Bryce Perry
 White Buffalo Studio
 Windsor Smith Home
 Jonathan Winslow
 Lucy and Jason Wolff
 Brooke and Brett Wyard
 Gennifer and David Yoshimaru
 Guillermo Zalamea
 Laurie Ziegler

\$500-\$999

Jennifer Andrews
 Eпитacio Arganza
 Lucie Ayres
 Lainie and Dave Becky
 Kristen Bell
 Allison and Larry Berg
 Kimberly and Nicolo Bini
 Jonathan Blinderman
 Julie and Stephen Block
 Franklin Otis Booth III
 Dominic Brazzel
 Jill and Robert Bronstein
 Joan and Michael Burke
 Center for Cultural Innovation
 Earl M. and Margery C. Chapman Foundation
 Kathy and John Choi
 Alison and Richard Cottrell

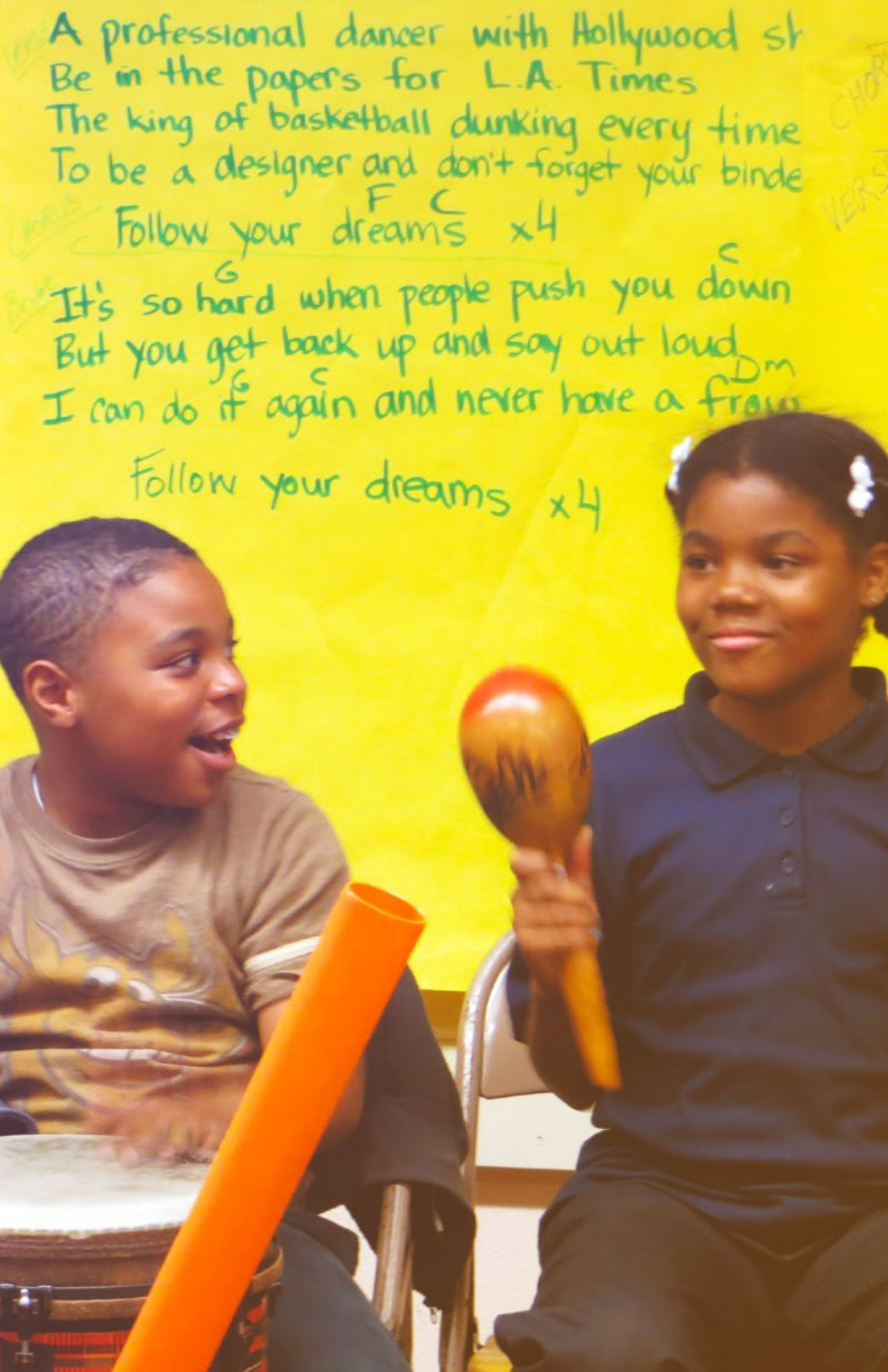


Stacy and Peter Cramer
Shelley Curtis-Litvack
Stephanie Darrow
Deckers Outdoor Corporation
Lynda DeLogi
Mary Patricia Dougherty
Suzy and Rich Eisen
Mr. And Mrs. Craig Elson
Lisa and Mark Esses
Cece and William Feiler
Susanna Felleman and Erik Feig
Hillary Fishman
Lori and Simon Furie
Callery Go
Gardein
Jennifer Garner
Certler Family Foundation
Allison Gingold
Whitney and William Glass
Joshua Goldsmith
Ellen Goldsmith Vein
Denica Gordon and David Mandel
Nicholas Grad
Leana Greene
Jacqueline Gunn
Laura Hale-Homewood
Gregg Hancock
Maggie Handsdorfer
Alison Hersel
Joan and David Hill
Kelly and Stephen Hinden
Barry Hinden
Tara Hirshberg
Sydney Holland
David Houck
Lisa and Matt Humiston
Margaret E. Hyde
Pell James Burns
Kori Jones
Amanda Jungman
Dr. and Mrs. Lawrence Kagan
Tamar and Matt Kane
Mary Kaufman
Abby and David Kohl
George Kotsiopoulos
Kaye Kramer
Monica and Ross Lacy
Dani R. Lancer

Candice Lapin
Lear Family Foundation
Christine Lennon
Ed and Mary Lewis Foundation
Marianna Linfesty
Shelly C. Litvack
Danita Lowes
Ben Lunsky
Marc L. Luzzatto
Stephen Ma
Michelle and Dan Mandel
Leo Marmol
David E. Martin
Rachael Martin
Alex Mason
Joelle Maynard
Meredith McBride and Eric Hall
Stephen McCray
Heather McQuarrie
Colleen Mintzer
Melissa Moskal Fabrizio
Ursula Nesbitt
Jeanne and Gary Newman
Michael Niborski
Christina Elke Noonan and
Timothy Noonan
Michael Nyman
Jaqueline and Joshua Pack
Ellen Palevsky
Colleen Pennell
Frances Pennington and Curt Smith
Bruce Perlmutter
Aileen Preonas
Dana and Jeff Refold
Reform
RollGiving
Brigitte and Mark Romanek
Lauren and Jeff Rosenthal
Laurie and Mark Rosenthal
Katherine Ross and Michael Govan
Jennifer Rush and Robert Morton
Bob Safford
Amber Sakai
Sahar Sanjar
Deborah Sawaf
Stephanie Schur
James Sie and Douglas Wood
Shana Silveri

Jamie and Christopher Simon
The Cynthia L. & William E. Simon, Jr.
Foundation
Ian Simovich
Nicole Sinkys
Charles Sipkins
Susan and Eric Smidt
Esther Song
Paul Stephan
Elizabeth Stewart
Amelia Stewart
Stephanie Stuart
Kelly and Nicholas Styne
Wendy Sullivan
Heather Taylor
Mark Terbeek
Laura Tippl
The Susanne and Gary Tobey Family
Foundation
Tolleson Wealth Management
Meg Touborg
Trina Turk and Jonathan Skow
Megan Twadell-Riera and Michael Riera
Veronika Vandenberg and Family
David Velasco
Vhernier USA, LLC
Clare and Thierry Vivier
Liza and Paul Wachter
Martha and Alex Wallau
Megan Webber
Renee Weber
Natalie Grof Weiner and Josh Weiner
Carol and Joseph Weller
Emily Whitesell and William Sind
Caroline Wittcoff





A professional dancer with Hollywood st
 Be in the papers for L.A. Times
 The king of basketball dunking every time
 To be a designer and don't forget your binde
 Follow your dreams x4

It's so hard when people push you down
 But you get back up and say out loud
 I can do it again and never have a frown
 Follow your dreams x4

Follow your dreams x4

FINANCIAL REPORT

STATEMENT OF ACTIVITIES

	FY 13/14	FY 12/13
REVENUE		
Contributions	\$1,822,711	\$1,666,989
Special Events, Net of Costs	\$226,134	\$254,638
In-kind Contributions	\$124,590	\$91,465
School Programs	\$457,837	\$462,096
Investment Income	\$106,212	\$12,029
Total Revenue	\$2,737,484	\$2,487,217
EXPENSES		
Program Services	\$2,002,299	\$1,844,588
General and Administrative	\$190,145	\$194,277
Fundraising	\$220,727	\$218,304
Total Expenses	\$2,413,171	\$2,257,169
Net Assets, End of Year	\$2,865,983	\$2,541,670

STATEMENT OF FINANCIAL POSITION

ASSETS		
Current Assets		
Cash and Cash Equivalents	\$905,208	\$1,131,618
Investments	\$313,047	
Accounts and Pledges Receivable, Net	\$509,033	\$548,322
Endowment Pledges Receivable, Net	\$239,499	\$217,293
Inventory, Net	\$65,243	\$49,641
Prepaid Expenses and Other Assets	\$40,538	\$34,362
Total Current Assets	\$2,072,568	\$1,981,236
ENDOWMENT PLEDGES RECEIVABLE, NET	\$73,200	\$136,151
ENDOWMENT INVESTMENTS	\$921,036	\$583,876
PROPERTY AND EQUIPMENT	\$101,569	\$102,430
Total Assets	\$3,168,373	\$2,803,693
LIABILITIES		
Accounts Payable and Accrued Expenses	\$302,390	\$262,023
Total Liabilities	\$302,390	\$262,023
NET ASSETS		
Unrestricted	\$965,085	\$844,824
Temporarily Restricted	\$767,554	\$769,369
Permanently Restricted	\$1,133,344	\$927,377
Total Net Assets	\$2,865,983	\$2,541,670
Total Liabilities and Net Assets	\$3,168,373	\$2,803,693



BOARD OF TRUSTEES

Joshua B. Tanzer, **Chairperson**
Laura Fox, **Co-Vice Chairperson**
Gennifer Yoshimaru, **Co-Vice Chairperson**
Chi-Chien Hou, **Treasurer**
Christine Weller, **Secretary**
Roger Weaver, **Crossroads Representative**
Jango Sircus*, **Inside Out Community Arts Representative**
Maria Bell, **President-at-Large**
Pamela Bergman, **Immediate Past Chair**
Paul Cummins, **Founder**
Laurie David, **Board Emeritus**

Sharon Blair	Steve McCray
Charles X Block	Liz Ondaatje
Kimberly Brooks	Pamela Posey
Carleen Cappelletti	Ilene Resnick
Hadley Davis Rierson	Amanda Schuon*
Kelly Fisher Katz	Naomi Scott
Patrick Herning	Rona Sebastian
Carey Hotchkis	Julia Sorkin
Natalya Hudis	Elizabeth Stewart
David Kahn*	Sutton Stracke
George Kotsiopoulos	Kathy Taslitz
Lisa Kudrow	

LEADERSHIP COUNCIL

Stephanie Ejabat	Darcy Pollack
Ari & Sarah Emanuel	Carolyn Powers
Cece Feiler	Amy Rappeport
Gale Goldring	Brigette Romanek
Heidi Haddad	Kim Schall
Nora Halpern	Jennifer Schiff
Travis Hansen	Stephanie Stuart
Monica Karo	Michael Thornton
Susie Krevoy	Sarah Watson
David Leyrer	Candie Weitz
Robin McMonigle	Ari Wiseman

ADMINISTRATIVE STAFF

Kristen Paglia Executive Director, Education & Programs	Amy Shapiro Executive Director, Advancement & Operations
Lora Cawelti* Program Coordinator	Jacob Campbell* Operations Assistant
Lauren Deck* Senior Program Coordinator	Jennifer Leitch Development Officer
Stephanie Kistner Senior Program Coordinator	Christopher Lor Financial Analyst
Amy Knutson Education & Programs Assistant	Chelsea Martell Events Coordinator
Elda Pineda Program Director	Matthew Martin Finance Manager
Lui Sanchez* Associate Program Director, Inside Out Community Arts	Allison Schaub Advancement Assistant
	Megan Strawther Development & Communications Associate

* New as of the 2014-2015 school year

CONTACT INFORMATION

1728 Abbot Kinney Blvd. #101
Venice, CA 90291

310.586.1017
info@psarts.org



PSARTS.ORG