



P.S. ARTS

Annual Report

2011/2012 School Year



"Being in your music program has helped me outside of your class because whenever I am bored, I play my recorder. It seems like when I am mad and I play my recorder, all of my anger goes out... The lessons you taught about rhyme and beat have put an impact on me in many ways. Thank you for all you have done."

taylor

5th grade student at a p.s. arts partner school



P.S. **A**RTS

table of contents

table of contents	page 2
letter from our co-chairpersons	page 2
letter from our co-executive directors	page 3
history and mission	page 4
overview and core programs	page 5
values	page 6
donor profile	page 7
board of trustees	page 8
finance report	page 9
timeline	page 10
acknowledgements	page 14
team members	page 16
contact information	page 17

Letter from our Co-Chairpersons

It is hard to believe that over the past twenty years, P.S. ARTS has grown from serving 285 students in one school to more than 12,000 students in 30 schools across Los Angeles and the Central Valley. Despite challenges brought on by trying economic times, P.S. ARTS has continued to provide sustainable arts education programs to some of the most underserved public schools in our community. We both feel very fortunate to be a part of P.S. ARTS, to work with a team of incredible Teaching Artists and staff, and to know firsthand the impact that the organization makes each and every school day. We are proud to be Co-Chairs of the Board of Trustees of P.S. ARTS, an organization that exists to ensure that every child in our community has access to a high-quality arts education.

From its core programs and community outreach, to its advocacy in the field and collaborative partnerships, P.S. ARTS is making a difference in the lives of so many children and their families. While research shows that arts education keeps students engaged and improves confidence, public schools across the state continue to eliminate arts programming due to shrinking budgets. With the dropout rate in Los Angeles County climbing as high as 50 percent in recent years, our children need the arts now more than ever. P.S. ARTS works to overcome these gaps and give our students the tools they need to take on the world.

However, we can't do this without your generosity. We hope that after learning about P.S. ARTS, you will be inspired to continue to support our efforts. Your contributions will help us provide arts education to students and shape them into lifelong, productive citizens who make a positive impact in their communities.

On behalf of the Board of Trustees, we truly appreciate your support.

Sincerely,

Pam Bergman
P.S. ARTS Co-Chairperson

Dave Leyrer
P.S. ARTS Co-Chairperson



Letter from our Co-Executive Directors



“our belief is that every student... is entitled to high-quality arts education.”

For the past twenty years, P.S. ARTS has worked to provide school communities with the benefits of arts education. We currently provide in-school programs to more than 12,000 students in 30 schools across six school districts in Los Angeles County and California’s Central Valley. We have also extended our efforts by providing additional arts services to 4,500 students outside of school time or in partnership with other Los Angeles nonprofits. Our belief is that every student, despite economic status, intellectual ability, or socio-cultural background, is entitled to high-quality arts education as part of his or her overall educational experience.

Studies show that sustained participation in the arts is associated with higher levels of academic achievement, college attainment, civic engagement, and increased high school retention, a finding that cannot be ignored when the dropout rate in Los Angeles County has climbed as high as 50 percent in recent years. Despite research that indicates the numerous benefits associated with arts education, California public schools continue to cut back on arts education. P.S. ARTS dance, music, theater, and visual arts classes directly compensate for the arts programming that has been eliminated from these communities.

It is through our passionate Teaching Artists, dedicated staff, and enthusiastic supporters that P.S. ARTS continues to grow. We believe that ensuring our programs become a permanent part of the public schools we serve is paramount, and we are proud to be part of an efficient and sustainable nonprofit organization. We keep our vision and goals at the forefront of our minds, striving to provide children with the creative tools they will need to thrive in a modern economy.

With every art program we start and every dollar we bring in from the community, we help more students find ways to express themselves, become inventors, and stay engaged in school. We greatly appreciate the support of the many individuals, investors, volunteers, friends, family, and community members who believe in our purpose.

We hope that through our annual report you will have a better idea of the work that goes into building our programs. Every week, we see firsthand the capabilities children have when provided the opportunity to express themselves through the arts. On behalf of our Board of Trustees, Teaching Artists, staff, and students we serve, thank you.

Sincerely,

Dr. Kristen Paglia
Executive Director, Education & Programs

Amy Shapiro
Executive Director, Advancement & Operations

Mission

P.S. ARTS is a nonprofit organization dedicated to improving the lives of children by providing arts education to underserved public schools and communities.

History

P.S. ARTS was created in response to significant education budget cuts in the 1970s and 1980s, which cut local tax revenues for public schools and resulted in the systematic reduction and elimination of arts programs in California public schools.

In the Spring of 1991, Dr. Paul Cummins, renowned educator, author, and founder of Crossroads School in Santa Monica, was on his way to the kitchen during a potluck dinner and literally bumped into a man that he had never met but looked quite familiar — renowned musician Herb Alpert. They began a conversation, which has become P.S. ARTS folklore... Paul decried the lack of arts education at a local school he had recently visited. Herb's response was, "You mean the arts are just gone from these public schools? What if I gave you a grant?" And thus, P.S. ARTS was founded as an outreach project of the Crossroads Community Foundation. In 2003, P.S. ARTS received its own non-profit 501 (c) 3 designation.

P.S. ARTS has grown from serving 285 students in one school, to more than 12,000 students in 30 underserved schools across Los Angeles County and California's Central Valley, and nearly 4,500 children through our strategic partnership programs. For the past twenty years, P.S. ARTS has provided nationally recognized arts instruction programs to tens of thousands of students attending underserved public elementary and middle schools in our community.



Overview

P.S. ARTS serves more than 12,000 students in 6 school districts through our core programs. Our organization hires and trains professional artists to develop state standards-based curriculum and teach dance, visual art, theater, and music classes in underserved public schools. It is the only artists-in-residence program in Southern and Central California that provides yearlong arts education in multiple disciplines to every child in a school integrated into the regular school day. With P.S. ARTS, children have the opportunity to paint, sculpt, sing, dance, express, and perform every week during the school year.

Additional Programs

P.S. ARTS serves nearly 4,500 students through our strategic partnership programs. Our organization works to educate and empower school and district administrators, classroom teachers, and parents through arts-related advocacy and implementation groups as well as technical workshops. The TakePART initiative, which launched in 2010, facilitates active resource sharing and collaboration across neighboring school districts to implement regional arts education programs that are complimentary and benefit children and families beyond what can be accomplished within individual school districts.

12,000 Students receive core programs

4,500 Students receive programs through partnership programs

75% Living at or below the Federal Poverty Level (\$23,050 for a family of four)

50% English learners

10% Students with Special Needs



- 71% Hispanic/Latino
- 11% Caucasian
- 10% Black or African American
- 4% Asian
- 2% Two or More Races
- 1% Filipino
- 1% Native Hawaiian or Pacific Islander
- 1% American Indian or Alaska Native

core programs

lawndale elementary

Billy Mitchell Elementary / Music, Theater & Visual Arts / 2000
FDR Elementary / Music, Theater & Visual Arts / 2005
Kit Carson Elementary / Music, Theater & Visual Arts / 2005
Lucille J. Smith Elementary / Music, Theater & Visual Arts / 2006
Mark Twain Elementary / Music, Theater & Visual Arts / 2005
William Anderson Elementary / Music, Theater & Visual Arts / 2005
William Green Elementary / Music, Theater & Visual Arts / 2004

lennox

Our strategic partnership programs.

los angeles unified

Baldwin Hills Elementary / Music / 1999
Beethoven Elementary / Music / 1999
Camino Nuevo Charter Academy Burlington Elementary / Visual Arts / 2000
Camino Nuevo Charter Academy Burlington Middle / Theater & Visual Arts / 2000
Camino Nuevo Charter Academy Harvard Elementary / Visual Arts / 2000
Camino Nuevo Charter Academy Harvard Middle / Theater & Visual Arts / 2000
Camino Nuevo Charter Academy Jose A. Castellanos / Visual Arts / 2010
Coeur d'Alene Elementary / Music & Visual Arts / 1992
Grand View Elementary / Music & Visual Arts / 1994
Playa Del Rey Elementary / Music, Theater & Visual Arts / 1998

reef-sunset

Avenal Elementary / Visual Arts / 2003
Kettleman City Elementary / Visual Arts / 2005
Reef-Sunset Middle / Theater / 2006
Tamarack Elementary / Visual Arts / 2006

santa monica/malibu

Edison Elementary / Theater / 2004
John Muir Elementary / Visual Arts / 2005
McKinley Elementary / Visual Arts / 2001
Will Rogers Elementary / Visual Arts / 2009

wiseburn

Our strategic partnership programs.



Values

- ✦ Providing universal access to an education that includes the arts is a matter of social justice, equity, and responsible public policy.
- ✦ Every child deserves high-quality arts instruction in a rigorous, sustained curriculum of dance, music, theater, and visual arts.
- ✦ Professional Teaching Artists are essential to an effective arts education program that builds skills, understanding, and confident self-expression.
- ✦ Sequential, discipline-based arts instruction belongs in the school day with the other core subjects.
- ✦ Early and ongoing arts education prepares students for a modern economy that values innovation and interdisciplinary thinking by fostering creative, academic, and social skills.
- ✦ The arts foster human connections across cultures, nurture a collaborative spirit among individuals, and provide expression of the uniqueness of each child.
- ✦ The arts are essential to healthy, thriving communities and contribute to a peaceful, creative, and prosperous community culture.



supplemental programs

community outreach

P.S. ARTS coordinates with principals and parent groups to provide parent education and community outreach services designed to increase their capacity to advocate for educational equity and to provide critical cultural experiences for the entire family. P.S. ARTS hosts “Family Art Nights” at the campuses of our partner schools, which feature an evening of free, hands-on family themed art projects. These events give families an opportunity to learn more about the value of arts education while bonding through creative activities and getting to know each other as artists and collaborators in a safe, fun environment.

professional development

P.S. ARTS’ Professional Development program supports Teaching Artists and classroom teachers’ capacity for teaching the California Visual and Performing Arts standards, integrating the arts into academic curriculum, and increasing student engagement in arts learning and experiences that help students become more successful in school and gain access to higher education and professional opportunities.

volunteer programs

The organization’s Volunteer Program provides opportunities to assist P.S. ARTS in the classroom, at community outreach events, and at fundraising events. Due to increased class sizes and the elimination of classroom aids, parents are encouraged to volunteer in the classroom to assist Teaching Artists with classroom management. In addition, parent volunteers are often utilized to promote and facilitate community outreach events at our partner schools. P.S. ARTS also provides opportunities for individuals and corporations to participate as volunteers in fundraising events.



Donor Profile

Why we believe in P.S. ARTS

Jeannette T. Yazedjian, P.S. ARTS Contributor

While developing the giving plan for the Jo Mitchell Foundation a number of years ago, I came across an article about P.S. ARTS and how this small local charity was providing arts education to underserved communities in Southern California. This encouraged me to focus our plan on assisting those Los Angeles-based charities that work tirelessly to better our communities.

Large or small, it is important to the foundation that our charities impact the lives of Los Angelenos directly. The betterment of our city really starts with us and our support of organizations like P.S. ARTS.

It is inspiring to see the effect of art, music, theater, and dance on children, and the way it provides a means for them to express joy or sadness. Understandably, a large amount of emphasis is placed on academics, but we do not want that part of a child's life to suffer because they do not have access to creative outlets.

As an attorney, I myself do not always have the opportunity to be creative, and, so, I recognize the need for art, in all its forms, in our lives. It's very satisfying knowing that our involvement in P.S. ARTS has enriched the lives of thousands of children. As an added bonus, it has also enhanced mine.



Board of Trustees



“we... strive to provide children with the creative tools they will need to thrive in a modern economy.”

Officers

Pamela Bergman, Co-Chairperson

David Leyrer, Co-Chairperson

Natalya Hudis, Vice Chairperson

Michael Thornton, Treasurer

Gennier Yoshimaru, Secretary

Roger Weaver, Crossroads Representative

Maria Bell, President-at-Large

Trustees

Sharon Blair

Kimberly Brooks

Carleen Cappelletti

Kelly Fisher Katz

Laura Fox

Patrick Herning

Carolyn Hotchkis

Chi Hou

George Kotsiopoulos

Susie Krevoy

Lisa Kudrow

Steve McCray

Liz Ondaatje

Darcy Pollack

Pamela Posey

Amy Rappeport

Ilene Resnick

Jennifer Schiff

Rona Sebastian

Julia Sorkin

Elizabeth Stewart

Joshua B. Tanzer

Kathy Taslitz

Sarah Watson

Christine Weller

Leadership Council

Stephanie Addis

Stephanie Ejabat

Ari & Sarah Emanuel

Cece Feiler

Gale Goldring

Heidi Haddad

Nora Halpern

Monica Karo

Robin McMonigle

Carolyn Powers

Brigette Romanek

Candie Weitz

Ari Wiseman

Board Emeritus

Paul Cummins, Founder

Laurie David



Finance Report

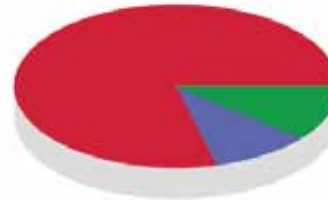
Funding Breakdown

Sources of Funding for Fiscal Year 2012



- ★ 48% Foundations
- ★ 19% Individuals
- ★ 14% Events (net of costs)
- ★ 11% Community Partners
- ★ 5% Corporations
- ★ 2% Government
- ★ 1% Other

Where Your Contributions Went



- ★ 79% Programs
- ★ 10% General and Administrative
- ★ 11% Fundraising

For every dollar donated, 79 cents went towards our arts education programs.

Statement of Financial Position

June 30, 2012

(With Comparative Totals for June 30, 2011)

ASSETS		
	2012	2011
Assets		
Cash and cash equivalents	\$ 1,350,653	\$ 638,318
Accounts receivable, net	359,338	549,501
Endowment pledge receivable	274,488	-
Endowment investments	420,479	-
Inventory, net	26,202	10,325
Prepaid expenses and other assets	16,092	21,767
Property and equipment, net	102,131	111,867
Total assets	\$ 2,549,383	\$ 1,331,778
LIABILITIES AND NET ASSETS		
Liabilities		
Accounts payable and accrued expenses	\$ 237,761	\$ 225,016
Total liabilities	237,761	225,016
Net assets		
Unrestricted	786,754	574,269
Temporarily restricted	830,380	532,493
Permanently restricted	694,488	-
Total net assets	2,311,622	1,106,762
Total liabilities and net assets	\$ 2,549,383	\$ 1,331,778

Statement of Activities

For the Year Ended June 30, 2012

(With Comparative Totals for the Year Ended June 30, 2011)

	Unrestricted	Temporarily Restricted	Permanently Restricted	Total	
				2012	2011
Support, revenue and other income					
Contributions	\$ 471,520	\$ 1,105,614	\$ 694,488	\$ 2,271,622	\$ 1,589,986
Special events, net of related costs	440,248	-	-	440,248	511,883
In-kind contributions	50,022	-	-	50,022	26,256
School programs	363,355	-	-	363,355	323,511
Investment income	1,211	479	-	1,690	2,707
Net assets released from restrictions	808,206	(808,206)	-	-	-
Total support, revenue and other income	2,134,562	297,887	694,488	3,126,937	2,454,343
Expenses					
Program services	1,523,644	-	-	1,523,644	1,528,413
General and administrative	178,907	-	-	178,907	257,576
Fundraising	219,526	-	-	219,526	202,370
Total expenses	1,922,077	-	-	1,922,077	1,988,359
Increase (decrease) in net assets	212,485	297,887	694,488	1,204,860	465,984
Net assets, beginning of year	574,269	532,493	-	1,106,762	640,778
Net assets, end of year	\$ 786,754	\$ 830,380	\$ 694,488	\$ 2,311,622	\$ 1,106,762



SUMMER

Gearing Up For School

July

- * Veranda Magazine and Windsor Smith host a gala to reveal the House of Windsor, a luxury estate in Brentwood decorated by leading designers and landscape architects. The house showcases luxury living with proceeds benefitting P.S. ARTS.
- * Angeleno magazine partners with P.S. ARTS and hosts their annual Live & Dine LA at the Fairmont Miramar Hotel & Bungalows. This event celebrates top chefs in Los Angeles and event proceeds benefit P.S. ARTS.

August

- * Guests enjoy an exclusive fashion show with hosts Elizabeth Stewart and Stephanie Solomon. A donation from sales is made to P.S. ARTS.
- * P.S. ARTS partners with UCLA for the Chan Fellowship Program. A student from Hong Kong is selected to work with P.S. ARTS for the fall to learn about the arts and nonprofits in America.
- * P.S. ARTS hires several new Teaching Artists, including: Visual Arts Teaching Artists Juan Muratalla, Nathalie Sanchez, and Matt MacFarland, and Theater Teaching Artists Matt Orduna and Joanne Lubeck Esser.



teaching artists

Kimberleigh Aarn, Theater Arts
Aiko Anglim, Music
Viktoriya Babchenko, Music
Ann Barron, Visual Arts
Judith Campanaro, Visual Arts
Amber Carrol, Music
Michael Delgado, Visual Arts
June Edmonds, Visual Arts
Rachel Galper, Music
Hilary Hahn, Visual Arts
Heather Lowe, Visual Arts
Joanne Lubeck Esser, Theater Arts
Matt MacFarland, Visual Arts
Johanna McKay, Theater Arts
Marwan Mograbi, Music
Benjamin Morales, Visual Arts
Tammy Moran, Music
Juan Muratalla, Visual Arts
Matt Orduna, Theater Arts
Leah Padow, Visual Arts
David Partida, Visual Arts
Jennifer Pennington, Theater Arts
Lissie Quishenberry, Music
Martha Ramirez, Theater Arts
Pedro Rivas, Theater Arts
Nathalie Sanchez, Visual Arts
Matthew Segal, Music
Tamie Smith, Visual Arts
Steve Spataro, Music
Terence Williams, Theater Arts
Sandy Yamashiro, Visual Arts

FALL

An Autumn of Art



September

- ★ To commemorate the 10th anniversary of September 11th, P.S. ARTS teams up with the California Artists Agency Foundation for a “Day of Service and Remembrance” to clean and beautify Couer d’Alene Avenue Elementary.
- ★ Escada hosts an event at the SLS Hotel Beverly Hills and a donation is made to P.S. ARTS.
- ★ Camino Nuevo Charter Academy now has theater at all of its middle school campuses!
- ★ P.S. ARTS partners with the Big Bang/Harmony Project Regional Youth Orchestra, the Lennox, Lawndale, and Wiseburn School Districts, the New Visions Foundation, and the Herb Alpert Foundation for the second year in a row to provide students with arts instruction during the school day through P.S. ARTS and after school and Saturdays with the Harmony Project.

- ★ Board Member Sharon Blair hosts the first annual Graffiti Art Contest for P.S. ARTS students at Grooveworx Studios in Santa Monica.

October

- ★ Board Member Lisa Kudrow and actress Mira Sorvino reunite for a special “Reunions Issue” of Entertainment Weekly and wear Post-it note dresses for a photoshoot that is auctioned to benefit P.S. ARTS.
- ★ P.S. ARTS celebrates its 20th anniversary with a cocktail party sponsored by Audi and hosted by jeweler David Yurman.
- ★ P.S. ARTS launches its second year of providing free Family Art Nights to partner schools. Projects include a Romare Bearden inspired collage and Japanese family crests.

November

- ★ Curriculum Specialist Richard Scher leads a Professional Development workshop for cross training with music.
- ★ The Harmony Project’s Big Bang Youth Orchestra put on a “Salad Symphony in Lennox where students, parents, and P.S. ARTS staff play music with instruments made out of vegetables!
- ★ P.S. ARTS along with The Bell Family Foundation and OneWest Bank host the 13th annual Express Yourself at the Barker Hangar at the Santa Monica Airport. This signature P.S. ARTS event is an afternoon for supporters and their families to experience art booths, fun activities, and samples from some of Los Angeles’ best restaurants.

WINTER

Art Warms The Soul

December

- ✦ Tim and Nicole Delger create an ad for P.S. ARTS that is published in Angeleno magazine. Check out this sped-up video of how the ad was created!
- ✦ Beauty Bazaar hosts an event at Lancer Dermatology in Beverly Hills for an afternoon of beauty to benefit P.S. ARTS.
- ✦ P.S. ARTS is selected for the Los Angeles County Arts Commission's ENGAGE Project: A New Media Intensive. A video is created in English and Spanish for our parents to learn more about our programs and pictures are taken for P.S. ARTS to help improve its social media presence.
- ✦ P.S. ARTS makes holiday appeals and sells holiday card inserts for the season of giving.

January

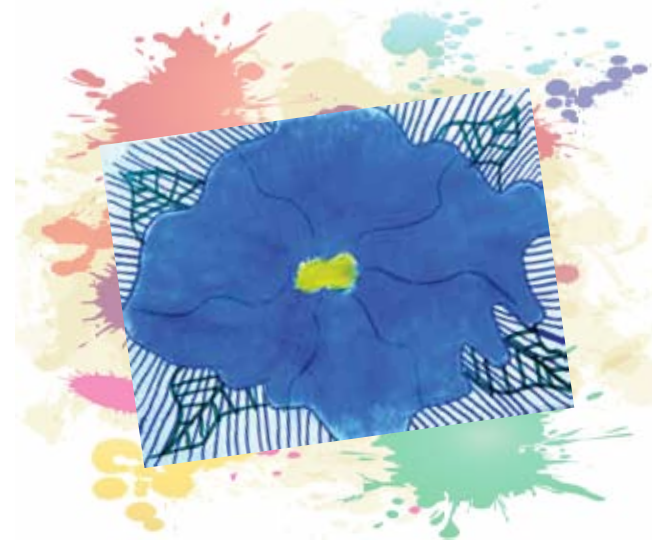
- ✦ P.S. ARTS kicks off 2012 with many exciting things in store!

February

- ✦ Senior Education & Programs Manager Elda Pineda attends a stakeholders meeting in Avenal, Central California.

March

- ✦ The Yale Whiffenpoofs and special guest stars Zooey Deschanel and Jesse Tyler Ferguson perform at The Broad Stage for the Yale Alumni Gala to benefit P.S. ARTS.
- ✦ In partnership with the California Artists Agency Foundation, P.S. ARTS provides Couer d'Alene Avenue Elementary with a free day of art for students and families.
- ✦ P.S. ARTS presents at the National Arts Enterprise Summit, "The Creative Economy and You," at Claremont Graduate University.
- ✦ P.S. ARTS takes part in the statewide initiative "CREATE CA" in San Diego and Fresno along with other prominent education, business, and art leaders.



SPRING

Art and Things

April

- ★ P.S. ARTS provides service learning for UCLA's Community Engagement course.
- ★ The second Graffiti Art Contest is held at Camino Nuevo High School.
- ★ The Sense Plays take place in Santa Monica and proceeds from tickets benefit P.S. ARTS.

May

- ★ P.S. ARTS hosts its first-ever Opening Night Party of Los Angeles Modernism with David Yurman at the Barker Hangar in the Santa Monica Airport. The signature event featured modern artwork and furniture.
- ★ P.S. ARTS hosts its popular Bag Lunch at Shanna Brooks' home in Beverly Hills. An afternoon of bags, lunch, and sunshine!
- ★ Visual Arts Teaching Artist Matt MacFarland takes 50 of his students on a field trip to the Los Angeles County Museum of Art.

- ★ P.S. ARTS provides free arts activities during the culminating performances at Centinela Valley Performing Arts Center.
- ★ P.S. ARTS teams up with the Yale Alumni Association to host an art supply drive for our partner schools in the South Bay.

June

- ★ P.S. ARTS helps facilitate the first-ever TakePART Festival: Connecting Communities Creatively. Students from Centinela, Hawthorne, Lawndale, Lennox, and Wiseburn come together for a free, art-filled afternoon.
- ★ The P.S. ARTS team enjoys a fun staff retreat at the reDiscover space in West Los Angeles, where they create projects with castoff materials.
- ★ Neyat Yohannes, an outstanding college student and Lawndale Elementary alum, joins P.S. ARTS for the summer to learn about arts education through the Getty Museum Multicultural Undergraduate Internship.



Funders and Contributors

Corporations

The Aisle New York
Ares Management, LLC
Atelier A.M. Inc
Audi of America
Babble Media, Inc.
Chris Barrett Design
Battersea
Beauty Undercover
Bloomingtondale's, Inc.
bluPRINT PR, LLC
Bonhams
Cain Modern
Christopher Anthony Ltd.
Clos-ette
Cloud 8, Inc.
Coin-Ops, Inc.
Denis Bloch Fine Art, Ltd
Deutsche Bank
Didler Ltd.
Dior Timepieces
The Walt Disney Company
DriveWise Auto
Elizabeth Dinkel Design
Escada
Fast Retailing, Inc.
Fat Chance
First Credit Bank
Freeman Group, Inc.
Gilt City
GoodSearch
Gray Gallery
Trip Haensch & Associates
Hayneedle
HBO
Hillary Thomas Designs Inc.
Honky Tots, Inc.
Imperial Fine Books
Irene Newirth Inc.
Is Or Isn't Entertainment, LLC
Molly Isakson Interiors, Inc.
Jeffrey Winter Fine Arts
Junk Food Clothing
Kimberly Klosterman Jewelry
L'ovedebaby
Lawrence Martin Klinge
Lifefactory
Lock 77, LLC
LORAC Cosmetics
Los Angeles Modern Auctions
Madeline Stuart & Associates
Marmol Radziner
Marvin Engineering
Maureen Murphy Fine Arts
Monique Lhuillier, Inc.
NBC Universal Media, LLC
Off the Wall Antiques, Inc.
One Kings Lane
Paradigm Agency
Parfums Christian Dior
Purely Bronze
Reform
Roll GIVING
Rose Tarlow Melrose House
rumba
Saks Fifth Avenue
SAM, LLC
Schuyler Samperton Interior Design
Streamline Illustrations
Studio 101
Target
Thomas Lavin, Inc.
Time Warner Matching Grants Program
Trina Turk
TWIW Insurance Services, Inc.
UBS Financial Services
Valentino
Veranda Publications, Inc.
Vista Certified Shorthand Reporters
Vivid Entertainment, LLC
Wells Fargo Foundation
West Elm
Westside Quilters
Andrew Wilder Gallery
The Window
Windsor Smith Home
Yurman Design
Government
California Arts Council
Department of Cultural Affairs, City of Los Angeles
Los Angeles County Arts Commission

Foundations

Abby & David Kohl Charitable Foundation
The Herb Alpert Foundation
The Bell Family Foundation, Inc.
Gertrude Josephine Bennett Family Foundation
The Otis Booth Foundation
The Brotman Foundation of California
John W. Carson Foundation
Center for Cultural Innovation
Earl M. and Margery C. Chapman Foundation
Charwell Charitable Foundation
The Steven A. and Alexandra M. Cohen Foundation
Creative Artists Agency Foundation
The Cynthia L. & William E. Simon, Jr. Foundation
The Davidow Charitable Fund
The Eisner Foundation
The Eli and Edythe Broad Foundation
Emanuel/Addington Living Trust
The Flourish Foundation
Centier Family Foundation
The Green Foundation
Hotchkiss Foundation
The J. Paul Getty Trust
Jonathan and Nancy Glaser Fund
Kayne Foundation
The Jena & Michael King Foundation
Kissick Family Foundation
Kudrow-Stern Family Trust
Lasky Charitable Lead Trust
Lea Family Foundation
Ed and Mary Lewis Foundation
The Lisa P. Lobb Foundation
Los Angeles Alumni Mu Phi Epsilon
Jo Mitchell Foundation
Monterey International Pop Festival Foundation
Neurobrands, LLC
New Visions Foundation
OneWest Bank Foundation
Pinkner Family Trust
The Polo Ralph Lauren Foundation
Powers Charities
RBSL Bergman Foundation
Regions Financial Corporation Foundation
Resnick Family Foundation, Inc.
Reynolds Family Foundation
Rothschild Family Foundation
Squid & Squash Foundation
The Streisand Foundation
The Suzanne Nora Johnson and David G. Johnson Foundation
S. Mark Taper Foundation
The Angell Foundation
The Brooks Family Foundation
The Three Sisters Foundation
Lucille S. Thompson Family Foundation
Weingart Foundation
Frederick R. Weisman Philanthropic Foundation
Wunderkinder Foundation
Individuals
Andy Abowitz and Michael Levin
Marc Abraham
Christopher and Simone Adams
Brenda Adderly
Scott and Lynda Adelson
Patricia and Felix Adlon
Teal Ahn
Mr. L. Wayne Alexander and Ms. Cheri Wilkinson
Kirsten Ames
Jeet Sohal and Eric Andersen
Claressa Anderson
Christina Chiu
Benjamin O. Arnold
Leslie and Paul Aronzon
Jacqueline Avant
Alyssa Cisc
Catherine Bach
Georgina Balles
Charmaine and Sean Bailey
Richard Baker
David Banks
Joe Baratta
Steve Bardwil
Annie Barnes
Elizabeth Baronides
Steve Bardwil
Annie Barnes
Elizabeth Baronides
Tracy Barone
Red Barris
California Arts Council
Robert L. Bayley
Lainie Becky

Laura Beebower
Annie Belanger
Colleen Bell
Karen Bell and Robert Cox
Drs. Rebecka and Arie Beldegrun
Lisa and Jordan Bender
Annaly Bennett
Renee Berghoff
Nancy Bergmann
Joanie Berkley
Magda Berliner
William Berry
William Bintlief
Nicolo and Kimberly Bini
Susan Bittan
Sharon & Dain Blair
Onnalee Blank
Carla Blizzard
Stephen and Julie Block
Kenneth Bloom
Cassandra Bloore
Bonnie and Leonard Blum
Lisa Blumenfeld
Melissa Bomes and Adam Winkler
Katherine Boone
Michelle Boren
Andrea Bostick
Teymour Boutros-Ghali
Jessica Bowlin
Susanna Bracke
Laura Brennan
Diane Brigham
David Brisbin and Laura Innes
Skip Brittenham and Heather Thomas
Tracy and Mitch Brody
Jill and Robert Bronstein
Kimberly and Albert Brooks
Shanna and Jon Brooks
Nicholas Brown
Sarah Brown
Gay and Anthony Browne
Cass Brownstein
Kacey Bruno
Jane and Marcus Buckingham
Kristen Buckingham
Dan Bunting
Squid & Squash Foundation
The Honorable Betsy Butler
Marla Butler
Elizabeth Callender
Barn Calley
Ms. Carleen Cappelletti
Trisha Cardoso
Jay Catille
Carrie Johnson and Adam Carr
Dianne Carr
Stephanie Carson
Christina Caruso
Salvatore J. Casola
Daniel Castellana and Deborah Lacusta
Dana Cataldi
Valerie Cavanaugh
Andrea, Barry, Garrett, Lindsay & Derek Cayton
Ling Chan
Judy Chang
Robert Chapek
Christopher and Beate Chae
Bianca Chen
Monica Chinlund
Christina Chiu
Sandra Churches
Cinna Christensen
Sharon Cicero
Alyssa Cisc
Kathleen A. Clements
Lisa Cliff
Walter Coblenz
Marina Cohn
Joyce Cooper
Erica and Brad Copeland
Nina Corbett
Clymns Costin and Art Streiber
Joanna Cowitt
Courtney Cox
Elizabeth Craig
Mr. And Mrs. Sharon & Paul Crane
Jorge Cruzata
Kimi and Graham Culp
Rhandena Dally
Candice Dalton
Lynne and Tom Danco

Blythe Danner
Darragh Danton
The David Family Foundation
Embeth Davidtz and Jason Sloane
Jane C. Davis
Jordan Davis
Francesca Delbanco
Ramon Delgado-Maynes
Kimberly and Lorenzo di Bonaventura
Joanna di Paolo
Elizabeth Dinkel Design Associates, Inc.
Carolyn Dirks
Michael Dobbs
Jeanne Dooley-Robinson
Ellen Dougherty
Mary Dougherty
Kenneth Edward Earl
Scott Ehrlich
Jenny and Richard Eidingier
Kim Eisman
Chad Eisner
Roy Essakow
Lisa Esses
Leesa Evans
Pamela Evans
Gayle and Marc Ezzalow
Quinn and Bryan Ezzalow
Shannon Factor
Erik Feig
Cece and Bill Feiler
Susan Feldman
Suzanne D. Feldman
Waldo Fernandez
Carlos Ferrer
Jacqueline and Jeff Filgo
Haley Fisher
Kelly Fisher Katz and Martin Katz
Sara Fitzmaurice and Perry Rubenstein
Barbara Flood Feldman
Sarah Fox
Gay and Anthony Browne
Ashley Franklin
Katherine and Nicholas Franklin
David and April Freitag
Cindy and Glenn Frey
Lisa Friedsen
Lori and Simon Furie
Lenore Furman
Oliver M. Furth
Don Gardner
Kristine Gardner
Elizabeth A. Gart
Tricia and Marc Geiger
Peter Gelles
Mary Georgi
Eve Somer Gerber
Elisabeth and Thomas Giovine
Bernad S. Givon
Whitney and William Glass
Elayne Glotter
Kathleen Glover
Amy Goddard Smith and John Zimman
Julie and Bruce Goldsmith
Andy and Amy Gordon
Mary Gordon
Denica Gordon-Mandel
Sherry L. Gossett
Adrienne Grant
Helen and Scott Graves
Jennifer Gravois
Kristen Greer-Paglia and Jaime Paglia
Chad Griffin
Natalie Grof
Jodi Guber Brufsky
Jennifer Guidi and Mark Grotjahn
Naomi Guth
Renee and Paul Haas
Barbara Halperin
Nora Halperin and Kerry Brougher
Brett Hammond
David Handelman
Philip Hannifin
Travis and Penny Hansen
Jennifer Hapillon
Laurie and Chris Harbert
Samuel Harper
Andrew and Ellen Hauptman
Steven and Mara Hawn
Jordan Hayes
Manuela Herzer
Lynne and Tom Danco

Ms. Marilyn Heston
Joanne Heyler, The Broad Art Foundation
David Hill
David Hoberman
Amanda Holdsworth
Diane Holland
Susan and Michael Horn
Werner Bros.
Jennifer and Andrew Howard
ArylHuntzinger and Alex Herschlag
Andrea and Lee Hutter
Margaret Hyde
Robert Iger and Willow Bay
Youri Iliev
Sara Israel
Gary N. Jacobs
Julie Jaffe
Melina Jampolis
Angela Janklow
Lisa and James Jeffs
Taryn Mead
Tamar and Matt Kane
Deborah Kaplan
Melanie Kaplan
Meredith Kaplan
Marcy and Eric Gold
Quinn Kaycoff-Manos
Terry Kelley
Patrick and Gloria Kennedy
Tanya Kennedy
Mira Kenney
Stacy and Jonathan Kessler
Carla and David Kettner
W. B. Kettner
Tim Kilpin
Elizabeth Kim
Andrea King
John King
Lauren and Richard King
Helen and Greg Kinnear
David Kissinger
Mike Kistner
Phyllis Klein
Jennifer Koffman
Tristan Komlos
Lisa Kondor
Jill Kott
Nina and Robert Kotick
George Kotsiopoulos
Douglas Kottler
Joseph Kotzin
Kaye Kramer
Susie and Brad Kreyvo
Tara Kuhntert Cote
Malcolm James Kutner
Veronika Kwan-Rubinek
Monica and Ross Lacy
Kellie Lakamp
Alexandra Lamm
Barrie Landrotter
Kristen Langran
Marion Laurie
Ellen Lecomte
Sue A. Lee
Andrew Leeds
Mary Leonard
Mike and Aliza Lesser
Robyn Leuthie Norris
Gia Levin
Suzann Levine
Sarah Levy
Susan Lewis
David Leyner and Alicia Tranan
Linda Lichter
Damon and Heidi Lindelof
Heather Lindsey
Marianna Linfesty
Rachel Lipp
Donna and Dan Livingston
The Long Family
Janey Lopaty
Joseph Lott
Lynne Praver
Joy Provisior
Bill and Tamara Pullman
Sahara Pynes
Nina Quaranta
Ron Radziner and Robin Cottle
Diana Mack
Edna Maclean
Melissa Malkin

Fred Manaster
Michelle B. Mandel
Celeste and Robert Marín
Lucinda Mariscal
Nikki and Douglas Mark
Robert Markovic
Bernard L. Markowitz
Merri Lee Marks
Wayne Marmorstein
Orji Joseph Marmur
Mary and David Martin
Steven E. Martin
Patrick Massett
Carol Matthews
Hillary W. Maybank
Steve McCray
Kimberly McDonald
Katie McGrath and J. J. Abrams
Leslie and Bill McMorrow
Guy Hindley and Amber Mead
Taryn Mead
Linda and Cary Meadow
Suzanne Meline and John Francis
Melanie Meltzer
Marla Messing
Vaughan and Nick Meyer
Andrea Michaelson
E.J. and Gregory Milken
Patricia Miller
Andrew Millstein and Rosemarie Fall
David Mizraoui
Nico Mizrahi
Annabel Montgomery
Susan Montgomery
Wesley S. Moore
Sarah Moritz
Lea Morse
Robert Morton and Jennifer Rush
Marsha Moutrie
Jane Muir
Stephanie Murray
Carol Muske-Dukes
Gale Musker
Anthony and Alina Mutalipassi
Paul Nadel
Michelle Nader
Eugene Nahemow
James Nakasuka
Jaimi N. Naniko
Spencer Neumann
Irene Newirth
Jeanne and Gary Newman
Gregory Nise
Susan and Michael Niven
Tori Nourafchan
Liz and Michael Nyman
Allison and Kevin O'Malley
Liz and David Ondaatje
Daniel Ostroff
Christopher Otcasek
Lars Pachutski
Suzan Paek
Ellen Palevsky
Nicole Pantenburg
Debra Parr
Stephanie and David Parsky
Danica and Charles Perez
Sally and Michael Perrin
Nicole and Sean Perry
Allison Petricoli
Whitney and Alex Phillips
Michele Pietra Cohen and Joel Cohen
Lauren Polak
Darcy and Jeff Pollack
Missy and Glen Polson
Susan and Gary Polson
Marc Pool
Lea and Barry Porter
Pamela Posey
Julia Post
Brenda R. Potter
John Powell and Melinda Lerner
Lynne Praver
Joy Provisior
Bill and Tamara Pullman
Sahara Pynes
Nina Quaranta
Ron Radziner and Robin Cottle
Diana Mack
Edna Maclean
Melissa Malkin

Peyton Reed
Ian Reichbach
Rachel Reinstein
Marleen Rentmeester
Bill Resnick
Kerrie Richards
Carolyn Richman
Hadley and Lee Rierson
Sara Riff
Dennis Roach
Blanca Roberts
Barbara and Ian Robertson
Tom Robinson
Lisa and John Rocchio
Paul Roeder
Peter and Judith Roje
Luia and Gary Romoff
Emily Rosedale
Diane Rosensthal
Lauren Rosenthal
Laurie and Mark Rosenthal
Kara Ross
Barbara Kaye Rothman
David Rouso
Julie Rowen
Karee Rowen
Jennifer and Matthew Rowland
Dan Ruber
Tara Rubin
Claudia Sachs Kremen and Paul Kremen
Eugene Sadavoy
Rae Sanchini and Bruce Tobey
Carla and Fred Sands
Steven Sarinana
Gretchen Schaffner and Alex Reid
Denise Schall
Kim and Darryl Schall
Andrea Schall-Hammer
Wendy Schellinger
Jennifer and Michael Schiff
Kori Schillerhoff
Peter and Donna Schlesse!
Marna and Rockwell Schnabel
Beverly Schur
Tema and Lenny Schrage
Amanda and Andy Schuon
David Schwartz
Marc Schwartz
Emily, Peter and Juliet Scott
Quyinh Sebastian
Roma Sebastian
Barrie Segall
Christina Segel
Steven and Alison Serber
Joyce Sevilla
Rachel T. Shapiro
Ms. Rita Shapiro
Romnie Shapiro
Susan Shenberg
Azadeh Shladovskoy
Lauren Shuster
Suzy Shuster-Eisen
James Sie and Douglas Wood
Susan Sie
Kari Simmons
Jamie Simon
Lindsey Simovich
Mike and Jennifer Singer
Nicole Sinks
Jeremy Sisto
Martin A. Sklar
Dana and Edward Slatkin
Leslie Slatkin
Florence and Harry Sloan
Carla Smith
Angelique Soave
Esther Song
Julia and Aaron Sorkin
Sharian Spencer
Ley Spiro and Melissa Rosenberg
Arianna Spynne
Melanie and Tom Staggs
Andrea Stanford
Randy Starr
Andrew Stearn
Stephanie Steinman
Terry Segall
Matty Streenchock
Leslie Stern
Rachel and Eric Stern
Joan Stevens

Elizabeth Stewart
Stine Family
Maureen Stockton
Roger Stoker
Mark and Tammy Strome
Wisconsin Sturm
Kelly Styne
Steve and Ani Supowicz
Sally and Tony Morina
Timothy Sweeney
James Martin Sweigert
Peggy Tachdjian
Josh and Suzy Tanzer
Katie and Douglas Tarses
Sara Tarses
Kathy Taslitz
Tania M. Tavangarian
Alison R. Taylor
Heather Taylor
Stephen S. Taylor
Sunday and Scott Taylor
Barbara and Richard Tell
Mr. & Mrs. Gregory & Heather Thomas
Helen and Thomas Thomas
Michael Thornton
Bobbie Tigerman
Mr. And Mrs. Carrie & Peter Tilton
Carolyn and John Tipton
Hillary Tisch
Jamie Tisch
Ashley Tomlinson
Veronica Toub
Meg Toubourg
Kelley Tows
Laurey Treiger
Christopher Tricarico
Briggitta Troy and Alder Lawrence
Brimley Turner
Lauren and Bobby Turner
Dr. and Mrs. Alex Vadas
Ruben Valerio
Michael and Claire Van Konynenburg
James Van Trees
Christopher Victor
Clare and Thierry Vivier
Alexandra Von Furstenberg, LLC
Natalia Gregson Wagner
Lena Wald
Emily and Gregory Waldorf
Christopher Waterman
Sarah Watson and Hardy Ophuls
Roger and Donna Weaver
Jake Weber and Elizabeth Carey
Steven and Alison Serber
Bridget Weich
Jody Weinberg
Liane Weintraub
Leslie Weisberg and James Hymen
Mary Ann Weisberg
Jennifer Weiss
Shana Weiss and John Silva
Christine and Jeff Weller
Peter White
Emily Whitesell and William Sind
Cliff Williamson
Lisa Wilson-Wirth
Jodi and Andrew Wing
Rhonda Wixen and Warren Wixen
Jason and Kelly Wolff
Sofia and Russell Wolpert
Lauren Wong
Jennifer Wooster
Deltra Wright
Tom Wudl
Brooke and Brett Wyard
Gillian Wynn
Kulapat Yantrasat
Sherry Yang
Sheri York
Jennifer Yoshimaru and David Yoshimaru, D.D.S.
Shelly Youree
Bonnie Zane
Harriet Zeitlin
Diane and Michael Ziering
Christina N. Zilber

Community Collaboratives, Nonprofit, and School Partners

TakePART Partners

Arts for LA
Centinela Valley Union High School
Harmony Project
Hawthorne School District
Inside Out Community Arts
Lawndale School District
Lennox School District
Los Angeles County Arts Commission
Wiseburn School District

Policy Committees

California Alliance for Arts Education Policy Council
Superintendent Torlakson's Arts Education Blueprint Task Force

Service and Professional Development Partners

Getty Multicultural Internships
Music Center
New Visions
UCLA Chan Fellowship Internships
UCLA Service Learning Internships
Yale Alumni Association



achievements fy12

recognition

P.S. ARTS receives a Certificate of Special Recognition from Congresswoman Maxine Waters for our coordination of the TakePART initiative, a collaborative arts leadership effort between school districts in the South Bay.

collaboration

A joint resolution is signed by the Board Presidents of Centinela Valley Union High School, Hawthorne School District, Lawndale School District, Lennox School District, and Wiseburn School District to endorse TakePART.

advocacy

Executive Director, Education & Programs Dr. Kristen Paglia is named to the CREATE CA (Core Reforms Engaging Arts to Educate) task force to help raise the profile of arts education in public schools.

P.S. ARTS

Team Members

Education & Programs

Dr. Kristen Paglia

Executive Director, Education & Programs

Stephanie Kistner

Education & Programs Associate

Amy Knutson

Education & Programs Assistant

Elda Pineda

Senior Education & Programs Manager

Richard Scher

Curriculum Specialist

Advancement & Operations

Amy Shapiro

Executive Director, Advancement & Operations

Jennifer Leitch

Development Officer

Chelsea Martell

Advancement & Operations Assistant

Matthew Martin

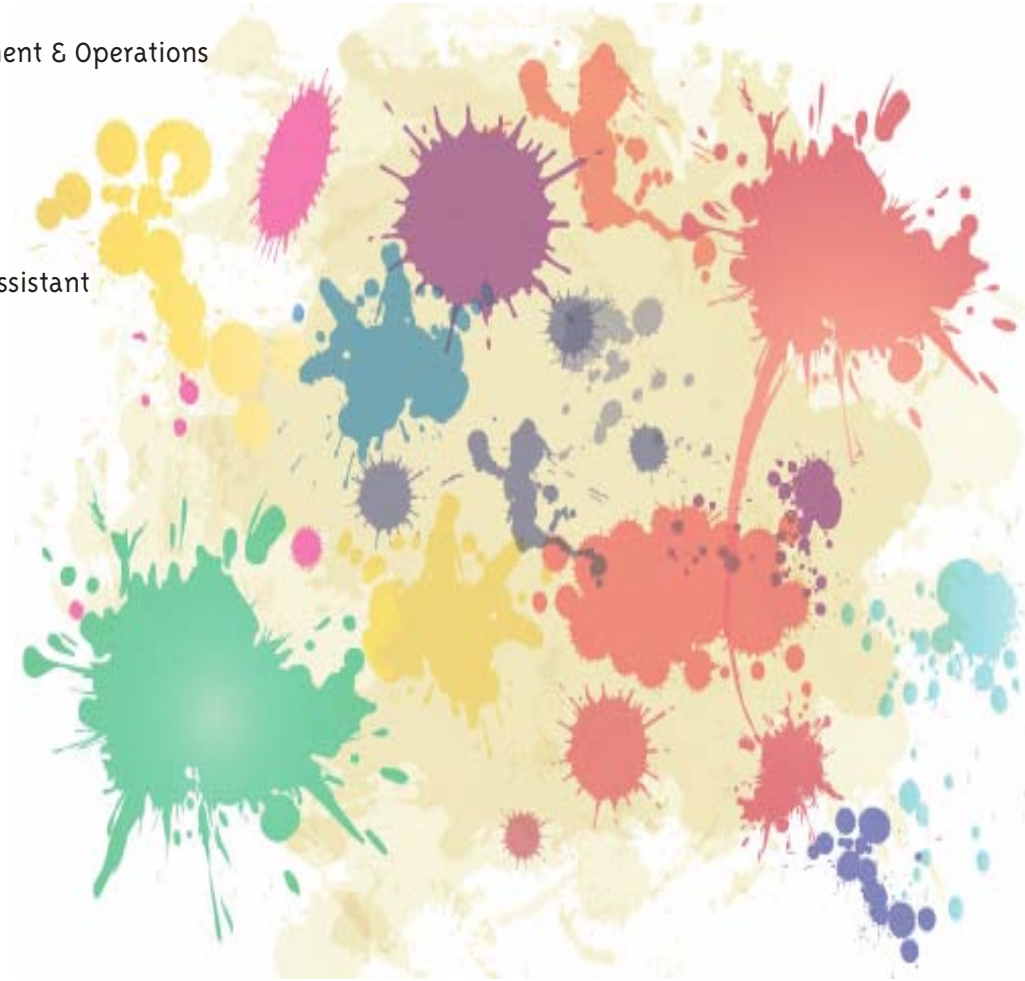
Finance Manager

Heather Myrick

Events Manager

Megan Strawther

Advancement Associate



A special thank you to the work and photos from
Alex de Cordoba and Elaine Lee.



Main Office

1728 Abbot Kinney Boulevard Suite 101
Venice, CA 90291

Contact Info

Office 310.586.1017
Fax 310.822.9102

General Inquiries

www.psarts.org
info@psarts.org

Connect with us online!

