



P.S.  ARTS
**ANNUAL
REPORT
2022-2023**





**WE HAVE THE
FREEDOM TO IMAGINE.
WE HAVE THE POWER
TO CREATE.**

WE ARE P.S. ARTISTS!

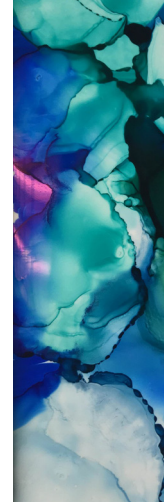
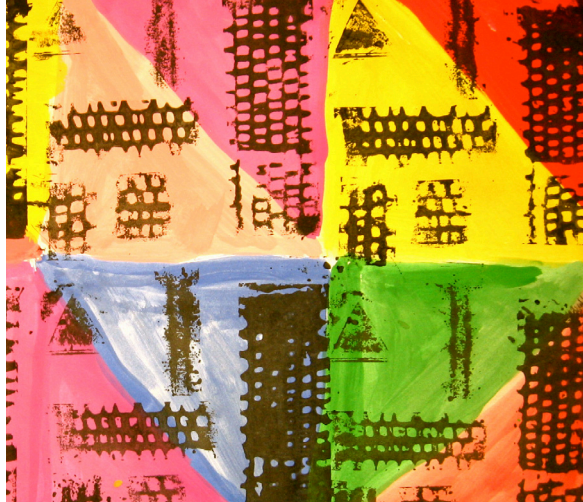


TABLE OF CONTENTS

MISSION & VISION	3
LETTER FROM THE CEO	4
DIVERSITY, EQUITY, & INCLUSION	5
P.S. ARTS PROGRAMS	6

In School Programs

Extended Learning

Community Engagement

Educator Training

DISTRICTS & SCHOOLS	7
DEMOGRAPHICS	9
THEME & ANCHORWORKS	12
EVENTS	13
FINANCIALS	15
DONORS	17
FACULTY ROSTER	21
BOARD & STAFF	22



MISSION & VISION

P.S. ARTS IS DEDICATED TO ADVANCING EQUITY AND OPPORTUNITY FOR CHILDREN AND YOUTH BY PROVIDING ARTS EDUCATION IN SYSTEMICALLY UNDER-RESOURCED SCHOOLS AND COMMUNITIES.

The P.S. in P.S. ARTS stands for public schools. P.S. ARTS was founded in 1991 out of the Crossroads Community Foundation by Dr. Paul Cummins with seed funding from musician and philanthropist, Herb Alpert. They recognized that a steady decline in funding since the late 1970s had produced massive resource inequities in California public schools, and arts programs were virtually nonexistent in the schools serving the highest numbers of youth affected by poverty and systemic racism. Since 1991, P.S. ARTS has grown from serving 285 students in one school to more than 30,000 students, expanding its program offerings across Southern and Central California.

DEAR P.S. ARTS COMMUNITY,

Dear P.S. ARTS Community,

I am thrilled to present the Annual Report for the transformative year that was 2022-2023. Our commitment to fostering artistic expression and education has never been more evident, and it is with great pride that I share the exciting developments and achievements of the past year.

Our diverse range of programs - from Classroom Studio to Extended Learning, Community Engagement, and Educator Development - has seen unprecedented demand. The spotlight shines on our Teaching Artist Seasonal Intensive trainings, acknowledged as a pivotal piece of the solution to meet California's pressing need for 15,000 new arts educators. As pioneers in this field, we are shaping the future of arts education through innovative training approaches.

We embark on the next phase of our journey while looking forward to the launch of our 3-year Strategic Plan. This comprehensive roadmap charts a bold course, placing strategic emphasis on Programmatic Expansion to increase our service population by 50%, as well as significant advances in Educator Development, Advocacy and Policy, Board Development and Governance, and Operations, Fundraising, and Culture, with a dedicated focus on Diversity, Equity, Inclusion, and Belonging initiatives. These priorities have



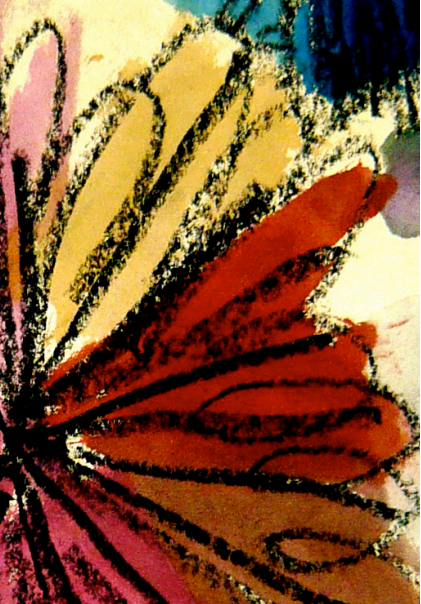
been meticulously identified through stakeholder engagement and thorough analysis, ensuring that we address challenges and seize opportunities with precision.

As we reflect on our achievements, I extend my deepest gratitude to our dedicated staff, board of directors, partners, and supporters. Together, we are empowering communities, transforming lives, and proving that the arts are not just a luxury but a fundamental catalyst for positive change.

With artistic fervor and anticipation for what lies ahead,

A handwritten signature in dark ink, appearing to read 'John Lawler', with a stylized, flowing script.

John Lawler



DIVERSITY, EQUITY, & INCLUSION

P.S. ARTS works within the public education system in our pursuit of social justice. This provides a broad-scale opportunity to create generative spaces for youth that foster learning and wellbeing and, therefore, success.

As part of the P.S. ARTS Diversity, Equity, and Inclusion initiative launched in 2018, a committee of staff, faculty, and trustees developed the following organization Equity Statement:

“AS PROPONENTS OF THE HUMAN RIGHT TO CLAIM EQUITY AND QUALITY OF LIFE, WE STRIVE, THROUGH OUR OPERATIONS AND ARTS EDUCATION PROGRAMS, TO INCREASE COLLECTIVE KNOWLEDGE, MEANS, AND ACTIONS THAT RECOGNIZE RESOURCES AND LEVELS OF SUPPORT MUST BE TAILORED TO THE UNIQUE NEEDS OF INDIVIDUALS AND COMMUNITIES IN ORDER FOR ALL PEOPLE TO HAVE EQUAL OPPORTUNITIES FOR SUCCESS.”

– P.S. ARTS Diversity, Equity, and Inclusion Committee, 2020

P.S. ARTS PROGRAMS

P.S. ARTS offers free, subsidized, and free-for-service programs based on school/organization eligibility and P.S. ARTS' capacity. P.S. ARTS' programs are rooted in the viewpoint that learning is a hands-on, constructive, process driven by students' prior knowledge, and natural curiosity. P.S. ARTS Teaching Artists tailor arts activities to encourage learning through inquiry, experimentation, and collaboration with a focus on global mindedness, and innovation. Our programs emphasize the role of empathy, caring, and authenticity in effective teaching practice.



In School Program

P.S. ARTS provides weekly arts education classes to students in our partner schools during the regular school day for the entire school year.

Extended Learning

Extended Learning provides art opportunities for students outside of regular instruction hours. Programs include the Inside Out Community Arts (IOCA) after-school theater arts program, SAC Lunch, a lunchtime drop-in Student Art Club, as well as summer and after school programs.

Community Engagement

P.S. ARTS aims to provide arts experiences for the entire family. Our free, intergenerational, community events reach nearly 5,000 students and families throughout the year.

Educator Development

P.S. ARTS offers online courses, training intensives, and arts integration coaching workshops as part of its Educator Training program. P.S. ARTS Teaching Artists receive a minimum of 20 hours of educator development training per year. In addition to reviewing the P.S. ARTS model framework, scope and sequence, approach to curriculum development and documentation annually, P.S. ARTS faculty participate in select training modules related to arts education theory and practice.

DISTRICTS & SCHOOLS

Alhambra Unified School District

Garfield Elementary School

Compton Unified School District

McKinley Elementary School

Whaley Middle School

El Segundo Unified School District

Center Street School

El Segundo Middle School

Richmond Street School

Lawndale Elementary school Distrtict

Billy Mitchell Elementary School

F.D. Roosevelt Elementary School

Jane Addams Middle School

Lucille Smith Elementary School

Mark Twain Elementary School

William Anderson Elementary School

William Green Elementary School

Will Rogers Middle School

Lennox School District

Buford Elementary School

Dolores Huerta Elementary School

Felton Elementary School

Jefferson Elementary Schoo

Lennox Middle School

Moffett Elementary School

Los Angeles Unified School District

Baldwin Hills Elementary School

Beethoven Street Elementary School

Charnock Road Elementary

Ellen Ochoa Learning Center

Franklin Avenue Elementary School

Foshay Learning Center (Middle School)

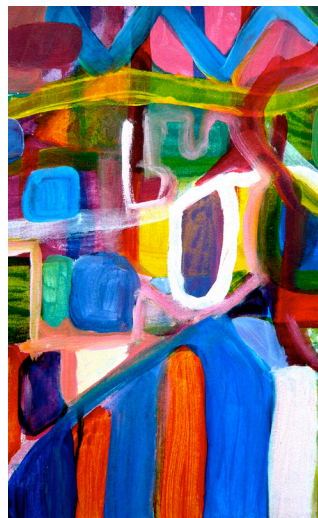
Grand View Boulevard Elementary School

GPSN (Summer)

Teresa Hughes Elementary School

Tweedy Elementary School

Walgrove Avenue Elementary School



**Los Angeles Unified School District Charter**

CNCA: Burlington
CNCA: Castellanos
CNCA: Kayne Siart
CNCA: Sandra Cisneros
Crown Preparatory Academy
Fenton Avenue Charter
Goethe International Charter School
Magnolia Science Academy 3
Montague Charter Academy
New Designs Charter School - Watts
New Heights Charter
Pacoima Charter
Rise Kohyang

Lynwood Unifed School District

Helen Keller Elementary School
Janie P. Abbott Elementary School
Lincoln Elementary School
Lindbergh Elementary School
Lugo Elementary School
Mark Twain Elementary School
Roosevelt Elementary School
Rosa Parks Elementary School
Thurgood Marshall Elementary School
Washington Elementary School
Will Rogers Elementary School
Wilson Elementary School

Paramount Unified School District

Frank J. Zamboni Middle School
Hollydale Elementary School
Keppel Elementary School
Lincoln Elementary School
Los Cerritos Elementary School
Mokler Elementary School
Wesley Gaines Elementary School
Zamboni Middle School

Reef-Sunset Unified School District

Avenal Elementary School
Kettleman City Elementary School
Tamarack Elementary School

Santa Monica-Malibu Unified School District

Edison Language Academy
Franklin Elementary School
Grant Elementary School
John Adams Middle School
McKinley Elementary School
Roosevelt Elementary School
Santa Monica Alternative School House
Will Rogers Learning Community

Torrance Unified School District

Adams Elementary School
Anza Elementary School
Carr Elementary School
Edison Elementary School
Victor Elementary School

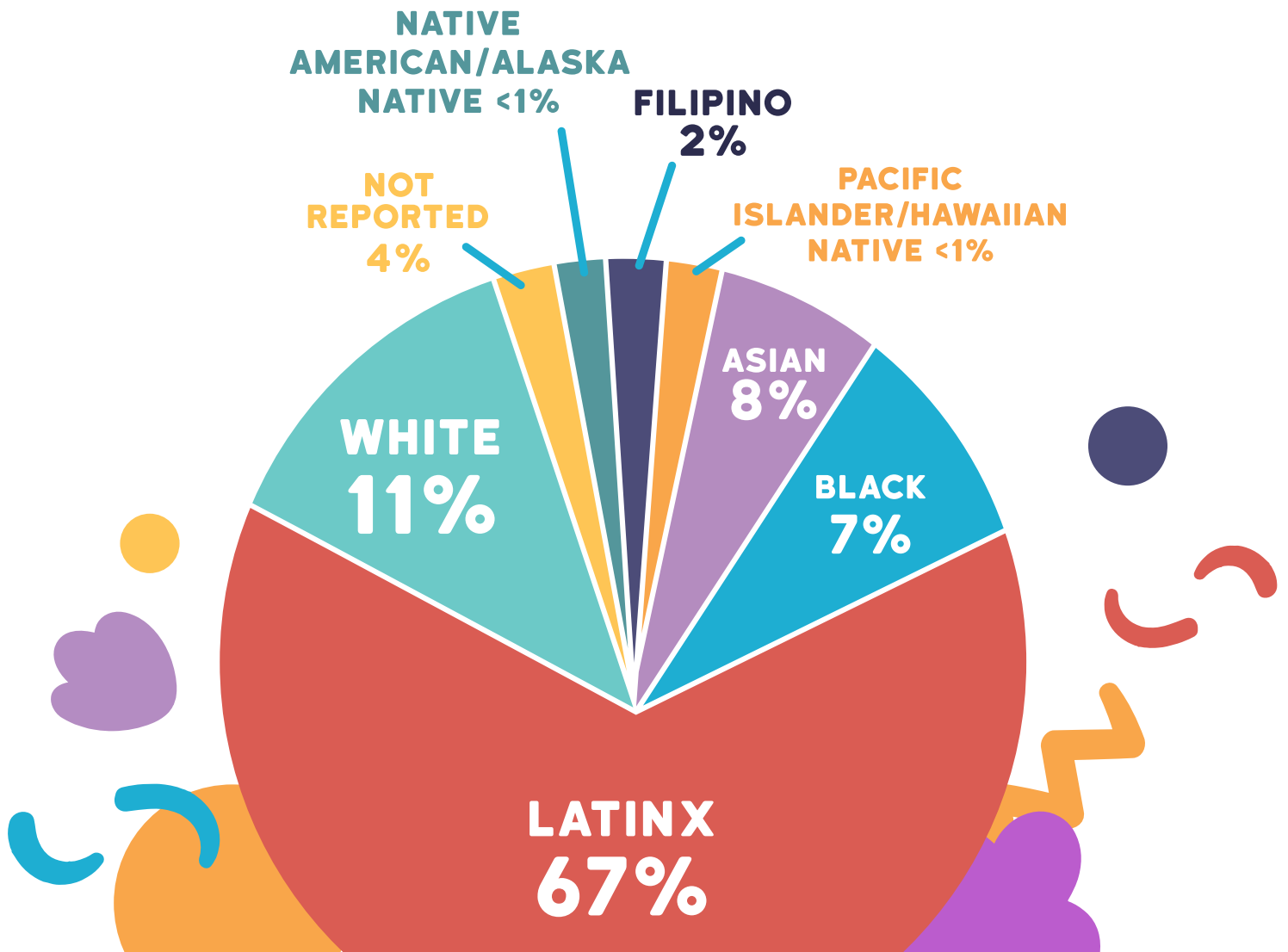
Wiseburn Unified School District

138th Street Elementary School
Juan Cabrillo Elementary School
Juan de Anza Elementary School

Partnerships

GPSN
Mayberry Park
Think Together (Palm Springs, Northern California)

DEMOGRAPHICS



30,000

K-8TH GRADE
STUDENTS

5,000

FAMILY AND
COMMUNITY MEMBERS

100

PUBLIC
SCHOOLS

500

EDUCATORS

15

SCHOOLS
DISTRICTS





Arts Education Program	~Students Served
CLASSROOM STUDIO In school arts instruction with a P.S. ARTS Teaching Artist	17,500
ARTS INTEGRATED INSTRUCTION Modeling/Co-teaching integrated arts lessons with generalist teacher	2,000
VISUAL ARTS STARTER KIT 10-lesson visual arts curriculum and teaching guide and art supplies	2,500
EXTENDED LEARNING Inside Out Community Arts after-school theater program, SAC Lunch (lunch time art club, and other arts instruction delivered outside of the school day	1,500
COMMUNITY Family Art Nights, weekend arts festivals	5,000

Federal Race/Ethnicity Categories	%
Native American/Alaska Native	<1%
Asian	8%
Black or African American	7%
Filipino	2%
Hispanic or Latinx	67%
Pacific Islander/Hawaiian Native	<1%
White 🌸	11%
Two+ Races or Not Reported	4%

% Low-income Households	% English Lang. Learners	% Special Ed. Services
75%	25%	14%

86% of P.S. ARTS students met or exceeded CA Department of Education performance standards in Visual and Performing Arts.

87% of P.S. ARTS students demonstrated social emotional competencies linked to wellness and success in school, work, and life.

92% of teachers surveyed agreed P.S. ARTS programs helped their students reconnect to school.





THEME & ANCHORWORKS

Every year, P.S. ARTS staff and faculty choose a theme to inspire curriculum planning and unify our multidisciplinary programs. We select “Anchorworks” to complement the theme, which are works by a diverse group of artists that help anchor teaching and learning in real world examples of artistic traditions and practices. Our theme for the 2022-2023 school year is **Community Garden: Yours, Mine, Ours.**



Community gardens have existed all over the world for thousands of years, serving many purposes from practical to transcendent. Ancient and contemporary artworks illustrate people cultivating land together to grow food and other essential resources, socialize and build community, connect with nature, take refuge, think, wonder, and create. The globally rich and enduring history of this practice makes *Community Garden: Yours, Mine, and Ours* a powerful metaphor for exploring a range of human experiences, conditions, and the interconnected survival of people, flora and fauna.

Featured Work

Dance: *Seeds...Re Generation* **Dancing Earth**

Description

Dancing Earth is a collective of First Nation, Aboriginal, Inuit, and “global Indigenous” performing artists founded by choreographer Rulan Tangen. Dancing Earth’s works reflect the rich and varied cultural heritage of its performers and draws on the lived experiences of Indigenous Peoples.

Visual Arts: *Our Lives Are in The Land,* **Christi Belcourt**

Christi Belcourt is a Cree Métis visual artist and social justice activist. Her work addresses the reciprocal relationship between human life and the natural world. Belcourt’s paintings depict the living world of Indigenous plant medicines and waterways that “connect natural and industrialized environments.”

Music: *Tempo: Music for Climate* **Lucy Jones**

"Music for Climate Action" is a project of the Dr. Lucy Jones Center for Science and Society. Inspired by the way in which music played a central role in building community around the American civil rights movement in the 1960s, Dr. Jones is using music to build and activate a community to address the climate crisis.

Theater (k-3): *Jaydens's Impossible Garden,* **Mélina Mangal & Ken Daley**

In this book, Jayden’s love of nature will inspire readers to see their environment and surroundings as bursting with opportunities for growth and connection.

Theater (4+): *Communal Spaces: A Garden Play Festival,* **The Motor Company**

The Communal Spaces festival has been an annual event since The Motor Company’s founding. While not all of The Motor Company’s site-responsive theater takes place in community gardens, these communal spaces serve to create a theater experience that engages communities, brings people together, and celebrates these shared green spaces.



EVENTS

VISION AND ACTION

In 2022, P.S. ARTS publicly launched the Vision & Action Fund, a legacy fund rooted in matching gifts from long-time supporters Pam Bergman and Laura Fox. With a goal to raise \$500,000 over five years, this new fund is dedicated to driving growth and ensuring our enduring position as a leader in public education equity and transformation through the arts. These funds will go directly towards service innovation and pilot projects allowing P.S. ARTS the support to grow new branches in whatever direction the education field and the communities we serve need. In early 2022, at an intimate dinner party setting, the Vision & Action fund was introduced to friends of P.S. ARTS to further build public involvement. Over 30 people showed up in support of it and to learn more about the dreams for this fund. Learn more about it here: <https://psarts.org/vision-and-action-fund/>



TASI (TEACHING ARTIST SEASONAL INTENSIVE) PROGRAM

In 2022, P.S. ARTS welcomed 22 Teaching Artist trainees to its first ever seasonal intensive. Through a Diversity Equity & Inclusion (DEI) lens, participants explored P.S. ARTS' program model, values, and mission in a series of online and in person workshops, courses, and model lessons. P.S. ARTS mentor Teaching Artists led trainees through our theater and visual arts stARTer kit curriculum, offering the opportunity to both observe and engage in hands-on learning. The intensive culminated in trainee-led demo lessons where participants were able to combine theory and practice, showcasing all they had learned through their own unique style and approach.

EXPRESS YOURSELF

Express Yourself 2023 was a magical day filled with creativity and smiles for over 750 guests who enjoyed 30 unique art activity booths, snacks, a performance from School of Rock West LA, live auctions with art pieces by RETNA, Mary Lai, and Brady Smith, raffle prizes, and so much more – all in support of P.S. ARTS' arts education programs in public schools.



COMMITTEE CHAIRS

Caroyln* & Damian Giangiacomo
Tawny & David Krintzman
Shari Rosenblum* & Marc Botnick
Shelton Wilder & Clark McCutchen

COMMITTEE MEMBERS

Jessica Anderson
Sunny Barach
Aimee Blank
Brielle* & Charles X. Block
Janine Braun
Lauren Clark Taitz
Dara Davis Beer
Theresa de los Santos
Sadie Diaz

Meredith Hall
Kimberly Kreuzberger
Rachel Levin
Jenny Lupe
Lydia & Nick McCutchen
Lauren & Simon Park
Kelly & Abhilash Patel
Jenny Resnik
Suzanne Rode* & Brian Hunt

Lacey Rose*
Starr Silver-Baker
Laura & Michael Solomon
Sharon & Jeff Stroll
Wendy & Matt Sugarman
Hayden Victor Ellison
Lauren Winnick

*P.S. ARTS Board Member

FINANCIALS

ASSETS		
Current assets	2021	2020
Cash and cash equivalents	\$ 250,735	\$ 581,764
Investments	2,120,735	1,400,030
Contributions and accounts receivable	600,089	1,005,136
Prepaid expenses and other current assets	42,523	59,256
Total current assets	\$ 3,014,082	\$ 3,046,186

Noncurrent assets		
Property and equipment, net	41,632	50,146
Security deposit	44,803	40,080
Endowment assets	3,281,324	2,555,915
Total noncurrent assets	3,367,759	2,646,141
Total assets	\$ 6,381,841	\$ 5,692,327

LIABILITIES AND NET ASSETS		
Current liabilities		
Accounts payable and accrued expenses	\$ 202,562	\$ 172,077
Deferred revenue		15,000
Grant advance	568,800	568,800
Total current liabilities	\$ 771,362	\$ 755,877

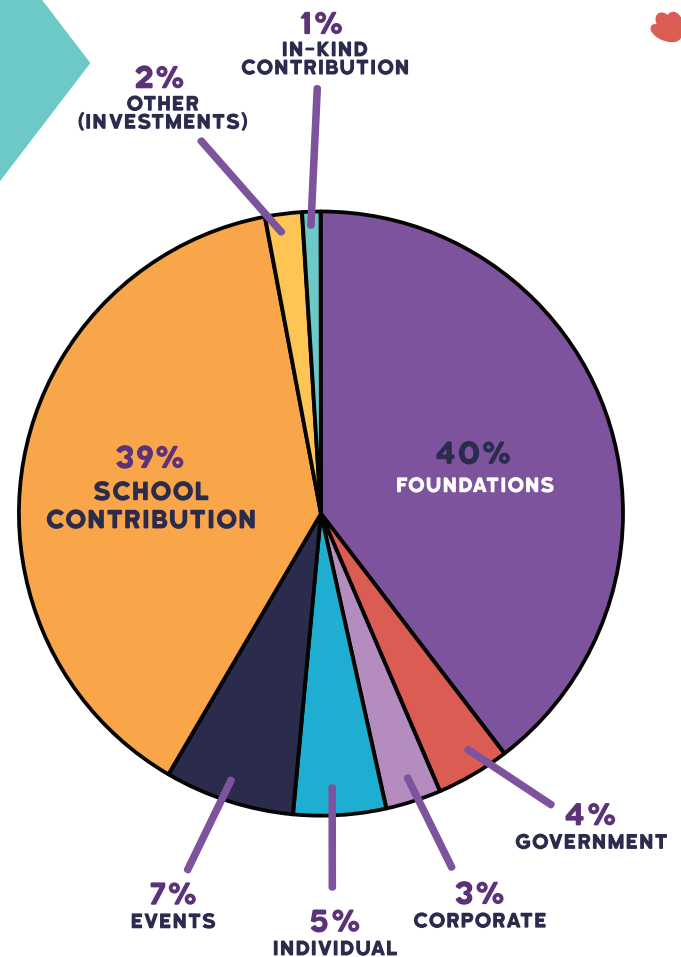
Deferred rent incentive		19,763
Total liabilities	\$ 771,362	\$ 775,640

Net assets		
Without donor restrictions		
Undesignated	741,059	331,749
Board designated	1,271,308	1,271,308
Total without donor restrictions	2,012,367	1,603,057
With donor restrictions	3,598,112	3,313,630
Total net assets	\$ 5,610,479	\$ 4,916,687
Total liabilities and net assets	\$ 6,381,841	\$ 5,692,327

FINANCIALS



\$0.75 of every dollar goes to program services



Revenue, support, and gains	Without donor restrictions	With donor restrictions	Total
Contributions	\$ 2,397,523.12	\$ -	\$ 4,655,532
School program income	2,089,411.17	-	2,089,411
Special events, net of related costs	92,474.27	-	94,007
In-kind contributions	59,223.98	-	74,224
Investment income		-	361,250
Total revenue, support, and gains	5,093,077.02	2,181,347.50	7,274,424

Expenses			
Program services	\$ 3,531,678.44	\$ -	\$ 3,531,678
General and administrative	519,249.57	-	519,250
Fundraising	674,741.69	-	674,742
Total expenses	\$ 4,725,669.70	\$ -	\$ 4,725,670

Change in net assets	\$ 367,407.32	\$ 2,181,347.50	\$ 2,548,755
Net assets, beginning of year	3,361,469.27	3,107,547.21	6,469,016
Net assets, end of year	\$ 3,728,876.59	\$ 5,288,894.71	\$ 9,017,771

DONORS

Individual Donors

Deena Abbe
Melissa Abbott
Ellison Abbott
Jennifer Abrahams
Erica Alshuler
Camille Ameen and
Ira Ingber
Jessica Anderson and
David Anderson
Loryn Arkow
Sunny Barach
Nicholas Barnhart
Mr. Robert L. Bayley
Danielle Becker
Dara Beer
Steven Benanav
Jennifer Berg
Pamela and Alan Bergman
Ashleigh Bergman
Aimee Blank
Brielle Block and
Mr. Charles X. Block
stephen brown
Eric Bruno
Dylan Brush
Vendela Busbee
Tim Calia
Judy Cartwright

Ashley Cassir
Deborah Lacusta and
Daniel Castellaneta
Diane Cecere
Eileen Cesare
Ms. Wendy Chang
Yahlin Chang
Andrea Chapelle Levy
Mimi Choi
Jaclyn Clifford
Karen Cooper
Carla Cretaro
Laura Croen
Clayton Crouch
Judith Daddario
Pegah Daneshrad
Victoria Danhaki
Ms. Blythe Danner
Ms. Stephanie Davis
Mr. and Ms. Marvin Demoff
Jim DeVerna
Ellen M DeWeerd
Sadie Diaz
Mary Donnelly Robinson
Adela Dudum
Aerin Duke
Christina Dunlop
Lindsay Dunn

Amanda Eberstein
Inna Effress
Brynn Efune
Mary Elizabeth and
Charlie Ellis Day
Hayden Ellison
Nikoo Enayati
Krista Felton
Ali Fenwick
Marina Filippelli
Deborah Fischman
lisa fishman
Richard Florio
Laura Fox and
Ben Van de Bunt
Jessica Franks
Lilia Fuller
Melissa Fumero
Joshua Gaffga
Keith Gallucci
Jane Garratt
Jennifer Garratt and
Justin Garratt
Stephen Gillikin
Bridget Gilroy
Paul Ginnetty
Amanda Goldberg
Matthew Goldenberg
Diane Goldman

Jennifer Golfman
Kassandra Gomez
Holly Gotta
Christopher Graber
Elyse Greenwald
Noelle Grimm
Cori Grosman
Samantha Gutstadt
Meredith Hall
Dr. Betsy Hamilton
Julia Harris
Hemmat Family
Michael Henderson Cohen
Kimberly Hescheles
David Hescheles
Shoshana Himmel
Glory Ho
Casey Holt
Chi-Chien Hou and
Phuong Vuong
Lauren Huff
Lynn Jacobson
Amy Jan
Andy Ju
David and Joan Kahn
Carol Karp
Dr. Marlene Kasman
Alexandra Kennedy-Breit
Pearl Ketover Prilik
Jinhee Kim
Sarah Kim
James Kinney

Kathy Kline
Loryn Kolbrenner
Joseph Kotzin
Saul Kravec
Kimberly Kreuzberger and
Bryan Kreuzberger
Susan Kukafka
Grzegorz Kwolek
Julie Lacouture
Jack Lancaster
Dean Langendorf
Hazel Law
Jessica and Jared Lazarus
Ellen Lee
Jennifer Lee
Rachel Lee
Vincent Leggio
Ivy Leibowitz
Leo and Sharon Leiderman
Megan Leitch
James LeVangie
Donna Lipton
Simone Lis
Eric Litman
Mr. Joseph Lorigo
Louise Loyst
Chris Malachowsky
Pat Malone
Marjorie Maltin
Paul Manson
Max Margolius
Janet Markman

Elizabeth Marks
David E. Martin
Emilynne Mascardo
Leonard Mausner
Lydia McCutchen
Anita Medal
Linda H. Mehr
Sharon Meron
Meredith Messer
Emily Meyer
Arielle Miller
Madelyn Miller
David Miner
Caryll Mingst
Heather Mingst
Maximilian Mingst
Nicole Moffatt
Alex Moreland
Michelle Morrow
Martin Muoto
Beth Murphey
Sean Neems
Irene Neuwirth
Jordan Newmark
Victor Khai Nguyen
Mai Nguyen-Miyoshi
Ann Norris
Becky O'Neill
Bruce Pachtman
Kristen and Jaime Paglia
Gaby Palmadessa
Lauren Park

Robert Park	Suzanne Selmo	Jan and Mark Victor
Kelly Patel	Rebecca Share	Yanni Vourgourakis
Alexandra Paul	Matthew Shindel	Tracy Ward
Aurele Pelaia	Starr Silver-Baker	Bonnie and Wayne Warren
Daria Polatin	Lindsey and Evan Simovich	James Wayne
Brenda R. Potter	Laura Solomon	Joanne Webb
Amita Ramesh	Christina Soto	Julia Weinberg
Andrew Rasley	Don Spetner	Kathy Weiss
Melissa Recalde	Square	Susan Welsh
Jaime Reichner	Sharon Srivastava	Jennifer Wexler
Simon Reisert	Laura Steuch	Charlotte Whang
Jennifer Resnik	Mike Stevens	Erica Wheeler
Richard Restivo	Madeleine Stolper	Lisa Whiteman
Mr. and Mrs. Rice	Noah Strangio	George Whitson
Gina Rocca	Sharon Stroll	Shelton Wilder and Clark McCutchen
Brett Rodda	Chris Sullivan	Mr. Matty Wilder
Suzanne Rode and Brian Hunt	Michael Suppes	Barbara Wilson
Lacey Rose	Erin Suyehara	Lauren Winnick
Shari Rosenblum Botnick	Lauren Swigert	Jing Xu
Peter Rosenblum	Lauren Clark Taitz	Samuel Yun
Jamie Ross	Blair Tanner	Rachel Zucker
Lori and David Rousso	Suzy and Josh Tanzer	
Patricia Rubenzadeh	Kathy Taslitz	
Rachel Rudman	Kathy Taslitz	
Shoko Sakai	Maria Terroba	
Ashley Sardonia	Irina Trajanovich	
Gretchen Schaffner and Alex Reid	Brianne Turtleaub	
Fran Scheff	Michelle Vannoy	
Carol & Mark Schrammel	Lawrence Vavra	
Whitney Schwartz	Wendy Vazquez	
Todd Selby	John Verwys	
	Susy Vettori	

FOUNDATIONS

The Ralph M. Parsons Foundation
The Horn Foundation
Dwight Stuart Youth Fund
The Broad Art Foundation
The Rosalinde and Arthur Gilbert Foundation
W. M. Keck Foundation
The Carol & James Collins Foundation
The Green Foundation
The Rose Hills Foundation
Johnny Carson Foundation
The Ella Fitzgerald Charitable Foundation
OneHope Foundation
Edward A. and Ai O. Shay Family Foundation
Crescent Cares Foundation
Pledgeling Foundation
The Grace Jones Richardson Trust
The Rosewood Foundation
Resnik Family Foundation
P.C. and Rosana Hsu Chao Foundation
GRoW @ Annenberg
Perenchio Foundation
The Conrad N. Hilton Foundation
Snap Foundation
The Robin and Gary Jacobs Family Foundation
Fox Family KALB Foundation
Renaissance Charitable Foundation
Kehillat Israel Reconstructionalist Congregation

CORPORATIONS

ARTZ Stake Pool
Bernstein Private Wealth Management
Bleachtech V UPS
Brookfield
Card One International
CBRE

Chainson Footwear, Inc.
FPM Group, Ltd.
Google
Hoopla
Kirkland & Ellis
Levi's
Lokai Holdings LLC
MEH Stories
Minted LLC
Munger, Tolles & Olson LLP
Nickelodeon
PwC
Silicon Beach Wealth Management
Snap Inc.
Spy Rose Productions
The Walt Disney Company
TodayTix, Inc.
Tumbleweed
Westfield
Yorn Levine Barnes Krintzman Rubenstein Kohner
Endlich & Gel

Government

California Arts Council
Department of Cultural Affairs, City of Los Angeles
National Endowment for the Arts

Organizations

Good Today
University of Kentucky

FACULTY

Camille Ameen
Jacinto Astiazarán
Amanda Booth
Wanda Boudreaux
Jennifer Browne
Jasmine Burgos
Hannah Butson
Thomas Callahan
Rebecca Cardenas
Will Cefalo
Ching Ching Cheng
Jackie Collins
Goreti Da Silva
Tamara Davidson
Alicia Davis
Bridget DeLee
Avery Dresel-Kurtz
Natalie Fryman
Claudia Garcia
Dennis Gersten
Stephen Gillikin
Kassandra Gomez
Kathleen Gonzales
Naomi Gonzales
Pilar Gonzalez Smith
Christina Gonzalez

Robyn Heller
Amani Holbert
Jackie Jaregui
Rebecca Lee
Robin Lilly
Kateri Lirio
Amanda Lutz
Matthew MacFarland
Krista Machovina
Jacqui Malouf
Rudy Marquez
LaShada Martin
Heather McAdams
Johanna McKay
Jose Medrano
Julio Munoz
Gina O'Toole
Tinia Orduña
Gina Orth
Julianna Ostrovsky
Kristy Pace
David Partida
Kira Pearson
Sarah Peters
Sophie Pipia
Rebecca Potts

Michael Pugliese
Davida Raffa
Martha Ramirez Oropeza
Deborah Reilly,
Nohela Schule
Eydie Shapiro
Crystal Sloat
Ernest Smith
Tamie Smith
Otieno Stephens-Terry
Zach Sutton
Kaila Tacazon
Tyee Tilghman
Annie To
Chloe Welmond
Paula Wilson-Vasquez



BOARD OF TRUSTEES & STAFF

P.S. ARTS is filled with dedicated individuals who work tirelessly to ensure that our students are not denied their right to a high-quality education that includes the arts!



BOARD OF TRUSTEES EXECUTIVE BOARD

Chair

Laura Fox

President at Large

Pam Bergman

Co-Vice Chair

Carolyn Giangiacomo

Co-Vice Chair

Chi Hou

Treasurer

David Kahn

Secretary

Deborah Gribbon

Crossroads Rep.

Pamela Posey

Founder, Emeritus

Paul Cummins

DEI Rep.

Steve McCray

TRUSTEES

Mary-Elizabeth Michaels

Brielle Block

Carleen Cappelletti

Sharyn Church

Shareef Farag

Marina Filippelli

Eric Hall

Grace Kangdani

Suzanne Rode

Lacey Rose

Shari Rosenblum

Amanda Schuon

Rona Sebastian

Jose Vitela

Amy Zoller

STAFF

LEADERSHIP

John Lawler
Chief Executive Officer

Elda Pineda
Deputy Director

FINANCE & OPERATIONS

Guillaume Wateau
Finance Director

Nikki Manibhai
Associate Director, HR & Operations

Alyssa Allen
Operations Assistant

ADVANCEMENT

Jennifer Garratt
Advancement Director

Gilda Davidian
Associate Director, Communications

Madeline Miller
Associate Director, Institutional Giving

Gaby Palmadessa
Development & Communications Coordinator

Aracely Jimenez-Hudis
Digital Content Manager

Miguel Jeronimo
Graphic Designer

EDUCATION & PROGRAMS

Lui Sanchez
Program Director, Extended Learning

Jaime Reichner
Senior Program Manager, Educator Development

KT Leuterio
Program Manager, Classroom Studio

Francisco Uribe
Program Coordinator, Extended Learning

Corene Johnson
Program Coordinator, Classroom Studio

Chaya Borison
Program Coordinator

Darryl King
Sr. Program Manager, Educator Development & Community Arts

Michele Ramirez
Program Coordinator, Extended Learning

Tiffany Owens
Program Director





P.S. ARTS

www.psarts.org

